

LEAD JERA SCENA  
NEO CHAIR ATHENA  
FORMEN GALASSIA  
SISTEMA CAST CIAK  
PRIMA HELLÒ OSCAR  
F01 F02 F03 F04  
VEDETTE SUPEROTTO  
PROVINO F01 BENCH  
F03 BENCH REGIA  
MOVIE JERA TREND  
DOMUS SET DIVO  
FLAGS

LAS<sup>®</sup>

**Indice**  
Contents  
Index

ABOUT US

**007**

direzionali - executive - fauteuil de direction

**014**

Lead  
Jera  
Scena  
Neo Chair  
Athena  
Formen  
Galassia

017  
025  
033  
041  
049  
055  
061

operative - operative chairs - sièges de travail

**066**

Sistema  
Cast  
Ciak  
Prima  
Hellò  
Oscar

069  
075  
081  
087  
093  
099

multiuso - for all - polyvalent

**106**

F01  
F02  
F03  
F04  
Vedette  
Superotto  
Provino

109  
113  
117  
121  
125  
129  
135

attesa & riunione - waiting & meeting - attente & réunion

**138**

F01 Bench  
F03 Bench  
Regia  
Movie

141  
145  
149  
153

lounge

**156**

Jera  
Trend  
Domus  
Set

159  
163  
167  
171

smart office

**174**

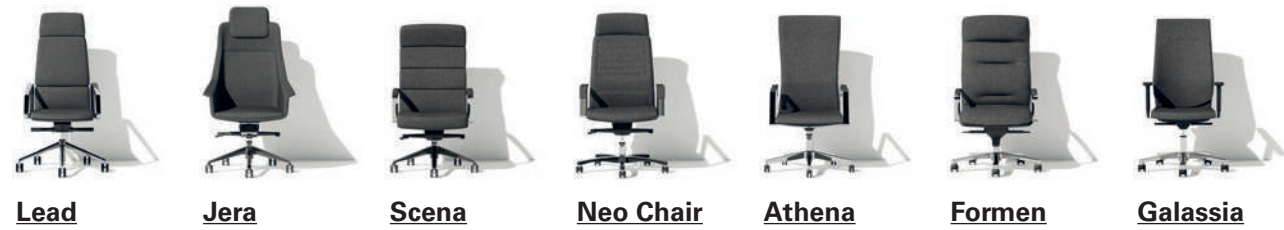
Divo  
Flags

177  
189

finiture - finishes - finitions

**200**

direzionali - executive - fauteuil de direction



operative - operative chairs - sièges de travail



multiuso - for all - polyvalent



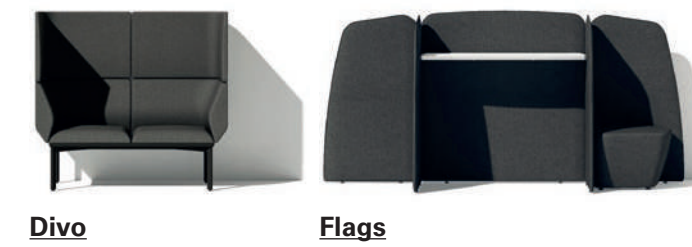
attesa e riunione - waiting & meeting - attente & réunion



lounge



smart office



# About us

**Il Gruppo LAS è una delle realtà industriali italiane più importanti nel settore del mobile per ufficio che unisce le competenze di tre unità produttive: mobili, sedute, pareti con la divisione Pareti. Un gruppo animato dalla volontà di un miglioramento continuo e da una ambiziosa visione aziendale spiccatamente internazionale. Un partner forte per progetti di grande valore.**

LAS Group is one of the leading office furniture manufacturers in Italy. The group combines the skills and experience of three business and production units: furniture, chairs and partition walls with their Pareti division. A group driven by and oriented towards continuous improvement and open to an ambitious and strongly international business vision. A strong partner for high standard projects.

Le Groupe LAS est l'une des plus grandes entreprises industrielles italiennes dans le secteur du mobilier de bureau, qui combine les compétences de trois unités de production: meubles, sièges, cloisons avec la division Cloisons. Un groupe animé par la volonté d'amélioration continue et une vision ambitieuse d'une entreprise tournée vers l'international. Un partenaire fort pour mener des projets de grande valeur.

**Arredi, sedute  
e pareti**  
*Furniture, chairs  
and partitions*  
*Meubles, sièges  
et cloisons*

**Il Gruppo LAS produce in 5 unità operative, tutte in Italia, con superficie complessiva di 121.000 metri quadri, 250 dipendenti, 5.000 colli/giorno, 1.200 spedizioni al mese. Ha consolidato un marchio ormai presente in 76 paesi nel mondo. Spazi organizzati ed efficienti, potenza produttiva, diffusione commerciale e precisione logistica.**



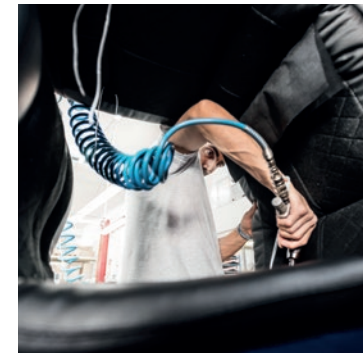
LAS Group can count on 5 production units, all in Italy, with a total surface of 121.000 sqm, 250 employees, 5.000 items shipped every day, 1.200 shipments per month. A consolidated brand known in 76 countries all over the world. Organised and efficient spaces, high production capacity, sales network and accurate logistics.



←  
L'uomo al centro di ogni attività produttiva e gestionale. Attenzione ed esperienza interagiscono con la più moderna tecnologia.  
Man is at the core of all production and management activities. Attention and experience interact with the most modern technologies.  
L'homme est le protagoniste de l'activité de production et de gestion. L'attention et l'expérience interagissent avec la technologie la plus moderne.



La production du Groupe LAS a lieu dans 5 unités opérationnelles, toutes situées en Italie, avec une surface totale de 121 000 mètres carrés et 250 employés qui gèrent 5 000 colis par jour et 1 200 envois par mois. Aujourd'hui, la marque est présente dans 76 pays du monde. Espaces organisés et efficaces, puissance productive, diffusion commerciale et précision logistique.



→  
La mano esperta  
dell'uomo modella,  
perfeziona e completa  
ogni elemento.

Human hands that  
shape, bring to  
perfection and finish  
each and every  
element.

La main experte de  
l'homme modèle,  
perfectionne et  
complète chaque  
élément.



**Ogni prodotto è concepito  
come massima espressione  
di un processo industriale  
perfettamente organizzato,  
supportato dall'esperienza e  
dalla manualità di operatori  
attenti.**

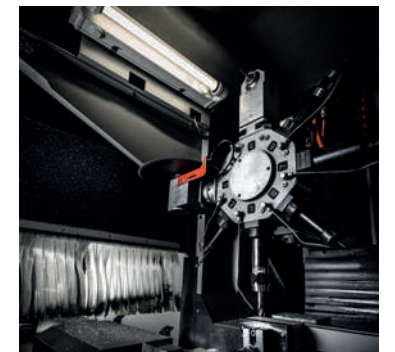
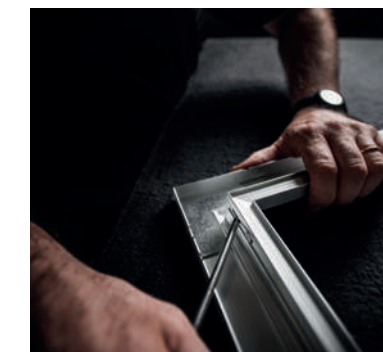
Each product is designed  
and manufactured as the  
maximum expression of a  
perfectly organised industrial  
process, supported by the  
experience and manual skills  
of dedicated operators.

Chaque produit est  
conçu comme expression  
maximale d'un processus  
industriel parfaitement  
organisé, soutenu par  
l'expertise et les habilités  
manuelles d'opérateurs  
attentionnés.

→  
Un moderno processo  
industriale integrato  
da esperienza e  
competenza.

A modern industrial  
process integrated  
with experience and  
know-how.

Un processus  
industriel moderne  
qui s'intègre avec  
l'expérience et le  
savoir faire.







**direzionali**  
executive  
fauteuil de direction

# Lead

Progetto CMR

Una collezione di poltrone direzionali di grande prestigio, articolata in tre altezze di schienali e due tipologie di braccioli, in pressofusione di alluminio e imbottiti. È un'icona, un simbolo di prestigio e autorevolezza per l'arredo di uffici e sale riunione.

A collection of executive office chairs of great prestige, available in three backrest height options and two options for the armrests, in die-cast aluminium and upholstered. A true icon, a symbol of leadership and authority to furnish offices and meeting rooms.

Une collection de fauteuils de direction de grand prestige, proposés dans trois hauteurs de dossiers et deux types d'accoudoirs, en aluminium moulé sous pression et rembourrés. Une icône, un symbole de prestige et charisme pour meubler les bureaux et les salles de réunion.







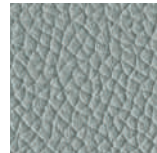
**Lead rappresenta, attraverso le sue forme e le proprie dotazioni, il ruolo di chi la utilizza e la funzione dell'ambiente in cui viene inserita, caratterizzandosi e caratterizzando in modo sempre diverso.**

Through its forms and its equipment, Lead communicates the user's position and the function of the environment in which it is set, standing out and characterising it in an ever-new way.

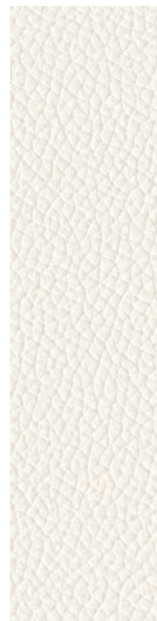
←  
I braccioli imbottiti e completamente rivestiti esprimono comfort e grande qualità costruttiva.  
Upholstered and finished armrests communicate comfort and high structural quality.  
Les accoudoirs rembourrés et entièrement revêtus communiquent le confort et expriment l'excellente qualité de la construction.



cod. 774

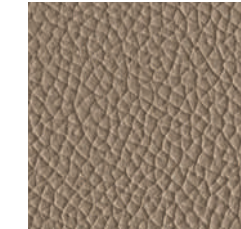


cod. 773



cod. 780

cod. 778



Lead exprime, à travers ses formes et ses accessoires, le rôle de l'utilisateur et la fonction de l'environnement dans lequel il est inséré, en se proposant avec une caractérisation différente à chaque fois.



La qualità è contenuta in ogni particolare. La cura progettuale coinvolge ogni componente, fino alle basi proposte in alluminio pressofuso o in legno, fisse o su ruote.

Quality in every detail. Great attention is paid to design, in each and every component, including the base frames that are available in die-cast aluminium or wood, fixed or on wheels.

La qualité s'exprime dans tous les détails. Le soin du design touche tous les éléments, jusqu'aux bases proposées en aluminium moulé sous pression ou en bois, fixe ou sur roues.

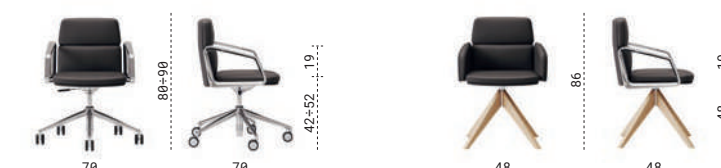


cod. 780

→ I braccioli in alluminio pressofuso alleggeriscono la poltrona conferendole stile e modernità. The die-cast aluminium armrests lighten the armchair and give it a stylish and modern look. Les accoudoirs en aluminium moulé sous pression donnent au fauteuil légèreté, style et modernité.



cod. 779



# Jera

Orlandini Design

Jera è una moderna seduta direzionale, comoda e avvolgente, proposta in due altezze e tre versioni. Le forme, nette e decise, sono valorizzate da un'imbottitura liscia o a fasce cucite.

Jera is a modern executive chair, comfortable and enveloping, proposed in two heights and three versions. Its shapes, clear and neatly outlined, are enhanced by smooth upholstery or sewn bands.

Jera est une chaise de direction moderne, confortable et enveloppante, proposée en deux hauteurs et trois versions. Ses formes, claires et décisives, sont renforcées par un rembourrage lisse ou des bandes cousues.







cod. 603



cod. 777



cod. 694



cod. 693

**La comodità della poltrona è aumentata dal poggiatesta imbottito e dal cuscino, con rivestimento uniforme o differenziato. Stile e comfort sono perfettamente armonizzati.**

The comfort of this chair is increased by the upholstered headrest and seat, with plain or matching patterns. Perfectly harmonised style and comfort.

Le confort du fauteuil est augmenté par l'appui-tête rembourré et par le coussin, avec sa couverture uniforme ou différenciée. Une harmonie parfaite de style et de confort.



executive



fauteuil de direction







# Scena

CSR Las Mobili

Una collezione classica e moderna insieme, disegnata per gli amanti delle forme morbide ma rigorose. Scena è una famiglia composta da poltrona direzionale, semi direzionale e seduta per ospiti.

A classic and modern collection, designed for lovers of soft but rigorous shapes. The Scena family is composed of executive chair, semi-executive chair and guests chairs.

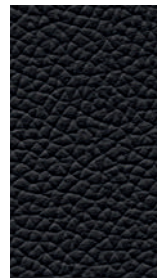
Une collection classique et moderne, conçue pour ceux qui aiment les formes douces mais rigoureuses. Scena est une famille composée d'un fauteuil directionnel, d'une chaise semi-directionnelle et de sièges pour les visiteurs.







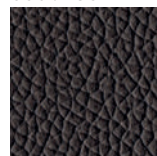
cod. 776



cod. 779



cod. 780



←  
Lo schienale è  
composto da cuscini  
orizzontali che  
rendono la postura  
confortevole e  
elegante.

The backrest comes  
with horizontal  
cushions that ensure  
a comfortable and  
elegant posture.

Le dossier a des  
coussins horizontaux  
qui rendent la posture  
confortable et  
élégante.



**Una collezione direzionale  
completa che si compone  
di poltrona a schienale  
alto, medio e di sedute per  
ospiti.**

A complete executive  
collection that includes  
armchairs with high  
or medium backrest and  
guests' seating.

Une collection de direction  
complète qui se compose  
d'un fauteuil à dossier haut  
ou moyen et de sièges pour  
les visiteurs.



**Le poltroncine per gli ospiti sono proposte con due versioni di basi, a slitta e piramidale a quattro razze.**

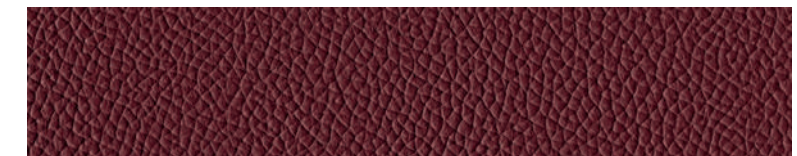
**Les fauteuils visiteur sont proposés avec deux versions pour la base, à traineau et pyramidale à quatre rayons.**

Guests' armchairs are available with cantilever frame or with four-wheel base.



cod. 604

→ Il bracciolo in alluminio pressofuso è dotato di un cuscinetto imbottito e perfettamente rivestito.  
The die-cast aluminium armrest comes with an upholstered cushion, perfectly finished.  
L'accoudoir en aluminium moulé sous pression est fini avec un coussin rembourré parfaitement revêtu.



cod. 790



# Neo Chair

Progetto CMR

Un classico del mondo delle sedute direzionali per ufficio. Le cuciture in tinta con il rivestimento, la ricca proposta di tessuti e pelli, le due versioni di bracciolo e le nuove meccaniche, la rendono ideale a soddisfare esigenze stilistiche differenti.

A classic item in the world of executive office chairs. Stitches in the same colour as the lining, a new range of fabrics and leathers, the two versions of the armrest and the new mechanism make it ideal to meet different stylistic requirements.

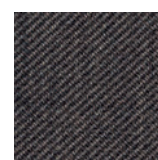
Un classique dans le monde des chaises de bureau de direction. Les coutures de la même couleur que le revêtement, la nouvelle gamme de tissus et de cuirs, les deux versions de l'accoudoir et les nouveaux mécanismes font de cette chaise la réponse idéale aux différentes exigences stylistiques.





L'imbottitura è sobria e confortevole, caratterizzata unicamente dalle cuciture che disegnano lo schienale. Segni chiari e netti che conferiscono modernità e stile. I braccioli, regolabili o fissi ad anello, riescono a trasformare completamente la poltrona variandone il design, il livello di rappresentatività, la funzionalità.

The upholstery is simple yet comfortable, marked only by the seams lines on the backrest. Clear and neat signs that make it modern and stylish. The armrests, adjustable or fixed and ring-shaped, can completely transform the chair by improving its design as well as the function and position it represents.



cod. 694

←  
Le cuciture di seduta e schienale creano un piacevole effetto tridimensionale.

The stitching on the seat and the backrest creates a pleasant 3-D effect.

Les coutures de l'assise et du dossier créent un agréable effet tridimensionnel.



Le rembourrage est sobre et confortable, caractérisé seulement par les coutures qui dessinent le dossier. Des lignes claires et nettes qui expriment modernité et style. Les accoudoirs, réglables ou fixés en forme d'anneau, peuvent complètement transformer le fauteuil en variant son design, son niveau de représentativité et sa fonctionnalité.



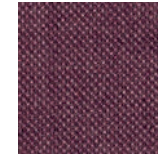


←  
Il poggiatesta eleva e completa lo schienale modificando le proporzioni dell'intera poltrona.

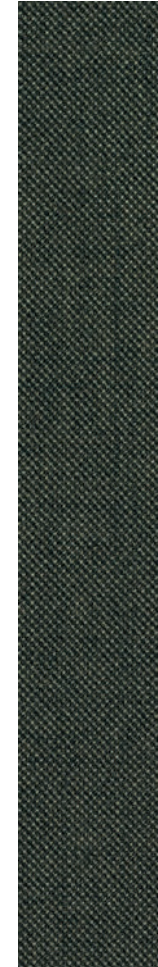
The headrest gives height to the backrest and changes the proportions of the armchair.

L'appui-tête augmente l'élévation du dossier et modifie les proportions du fauteuil.

cod.700



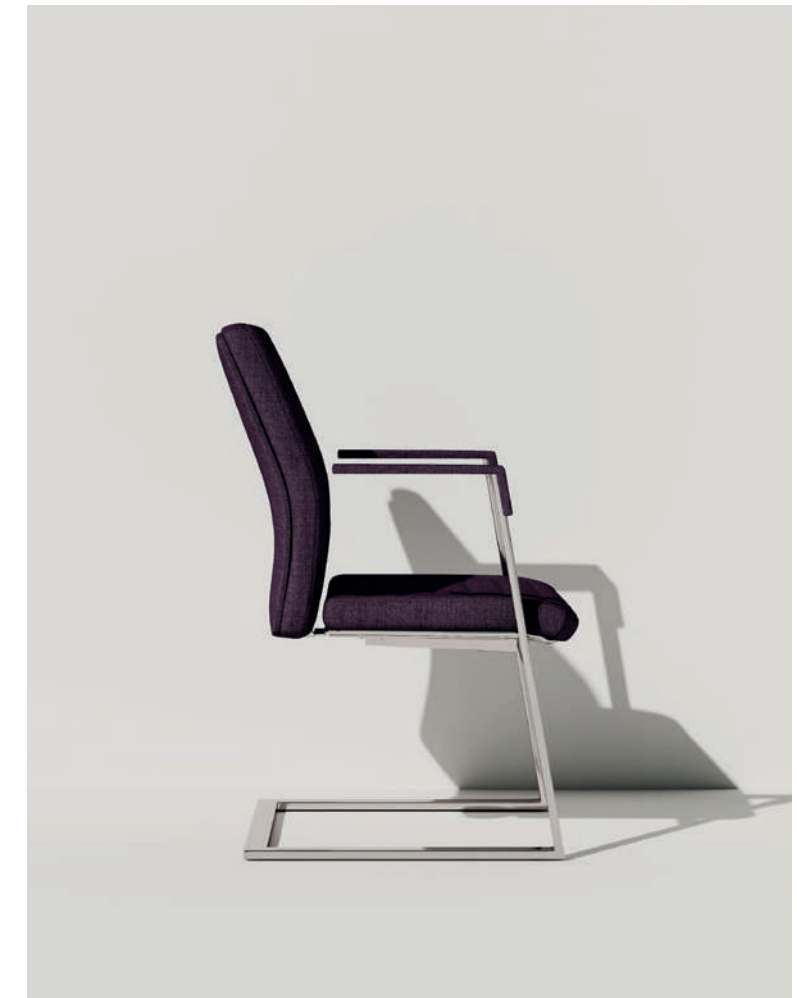
cod.695



**Un'accurata selezione di tessuti permette di ampliare le possibilità di rivestimento, superando le classiche in pelle. Ogni preferenza stilistica risulta perfettamente soddisfatta.**

Une sélection précise et nouvelle de tissus permet d'élargir les possibilités de recouvrement, en surpassant le cuir classique. Chaque préférence stylistique est parfaitement satisfaite.

An accurate and innovative selection of fabrics expands the range of available coverings, going beyond classic leather chairs. Every stylistic preference can be perfectly satisfied.



# Athena

CSR Las Mobili

Athena ha un design deciso e moderno. Le linee dritte, le variazioni degli spessori e le proporzioni la caratterizzano fortemente distinguendola dalle altre collezioni direzionali.

Athena features a strong and modern design. Thanks to its straight lines, different thickness and proportions this chair truly stands out among other executive collections.

Athena a un design décisif et moderne. Les lignes droites, les variations d'épaisseur et les proportions lui donnent un caractère fort en la distinguant des autres collections directionnelles.







cod. 773

**La versione cantilever, dalla forma sinuosa e esile, mantiene perfettamente il carattere della poltrona completando in modo uniforme la collezione.**

La version en cantilever, avec sa ligne souple e légère, maintient parfaitement le caractère du fauteuil, complétant la collection avec uniformité.

The cantilever version, with its neat curve lines, enhances the armchair personality and completes the collection with consistent and stylish combinations.



cod. 779



↑  
Il bracciolo è in acciaio cromato, rifinito da un cuscinetto imbottito e rivestito.  
The chrome-plated steel armrest is completed by an upholstered and finished cushion.  
L'accoudoir est en acier chromé, fini avec un coussin rembourré et revêtu.



052

direzionali

executive

fauteuil de direction



# Formen

CSR Las Mobili

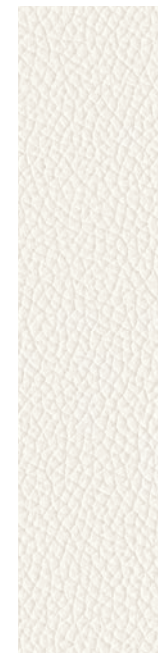
Poltrona presidenziale dalle forme morbide e accoglienti. Un autentico capolavoro di tappezzeria in cui cuciture e bordature definiscono ogni elemento. La poltrona si inserisce perfettamente in ambienti classici o in allestimenti moderni, pensati per armonizzare o evidenziare i contrasti.

Top-executive chair with soft and welcoming shapes. An authentic upholstery masterpiece where seams and edges define each and every element. This armchair fits perfectly both classic environments and modern settings, and it has been designed to harmonise or highlight contrasts.

Fauteuil présidentiel aux formes douces et accueillantes. Un chef-d'œuvre authentique de tapisserie d'ameublement dans lequel les coutures et les bords définissent chaque élément. Le fauteuil s'adapte parfaitement dans les environnements classiques ou dans les arrangements modernes, conçus pour harmoniser ou mettre en évidence des contrastes.







cod. 773



**La morbidezza dell'imbottitura di seduta e schienale aumenta la comodità e caratterizza lo stile.**

Soft upholstery for the seat and the backrest to increase comfort and enhance style.

La souplesse de l'embourrage de l'assise et du dossier augment le confort e caractérise le style.



# Galassia

CSR Las Mobili

Collezione direzionale dal design moderno, accuratamente progettata, che si distingue per la sagomatura del retro schienale che ne esalta le proporzioni. La forma di ogni elemento consente il perfetto rivestimento con pelle o tessuto.

Executive collection with a modern touch, carefully designed, which stands out for the shaping of its backrest which enhances its proportions. The shape of each element allows perfect finishing with leather or fabric.

Collection de direction avec un design moderne, soigneusement conçu, qui se distingue par la silhouette de l'arrière qui en améliore les proportions. La forme de chaque élément permet un revêtement parfait en cuir ou en tissu.



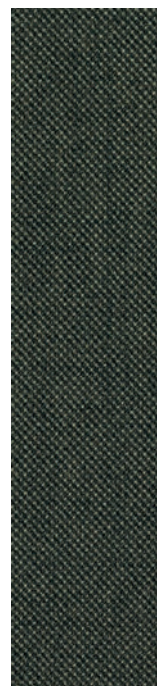




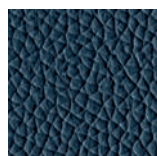
I braccioli caratterizzano in modo unico la poltrona, la soluzione fissa dalla forma arcuata conferisce grande modernità e stile.

The armrests enhance the personality of this armchair, thanks to its arched shape which makes it modern and stylish.

Les accoudoirs caractérisent fortement le fauteuil, et la solution fixe avec sa forme arquée lui donnent grande modernité et style.



cod. 695



cod. 786

↑  
Lo schienale schermo la seduta e definisce una visione posteriore nuova, slanciata e leggera.

The backrest dominates the seat and outlines a new backside perspective, slender and light.

Le dossier domine l'assise et définit une perspective arrière nouvelle, élégante et légère.



**operative**

*operative chairs*

*sièges de travail*

# Sistema

CSR Las Mobili

Sistema è una famiglia di sedute operative imbottite e in rete che vanno dalla dattilo alla visitatore su slitta. Lo schienale dalle forme arrotondate ne caratterizza lo stile rendendola un modello di riferimento nel panorama delle classiche sedute per ufficio.

Sistema is a collection of upholstered and mesh-finished office chairs, which includes typewriter and guest chairs with metal base frame. Their rounded backrest characterises their style and turns them into reference models in the panorama of classic office chairs.

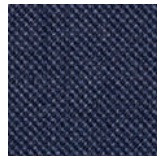
Sistema est une famille de chaises opérationnelles rembourrés et en maille qui vont de la chaise dactylo à la chaise visiteur sur base traineau. La ligne arrondie du dossier caractérise le style de la chaise en la transformant dans un vrai point de référence sur la scène des chaises bureau classiques.







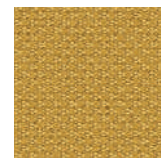
←  
 La versione per ospiti su slitta è dotata di una struttura in tubo di acciaio cromato e schienale sagomato in rete o imbottito.  
 The cantilever version for visitors is fitted with a chrome finished steel tube frame and mesh or upholstered shaped backrest.  
 La version à traineau pour visiteurs a une structure en tuyau en acier chromé et dossier en maille ou rembourré.



cod. 697

La poltroncina in rete si caratterizza per lo schienale ergonomico fortemente avvolgente.  
 Una versione dal design raffinato destinata ad un pubblico che ricerca efficienza e comfort.

The mesh version is characterised by its fully enveloping ergonomic backrest.  
 A sophisticated design to address an audience that seeks efficiency and comfort.



cod. 633

Cette chaise en maille se caractérise pour son dossier ergonomique très enveloppant.  
 Une version de design raffiné, adressée au public le plus exigeant qui recherche efficacité et confort.



# Cast

Massimo Costaglia



Poltroncina operativa dalle forme nette e decise proposta nelle versioni imbottita e rete. Rappresenta una valida alternativa alle sedute dalle forme più morbide. L'articolata proposta cromatica delle scocche e delle reti rende la collezione ampiamente personalizzabile.

Office chair with neat and clear shapes, available in the upholstered and mesh versions. An interesting alternative to chairs with softer and more rounded shapes. The rich range of available colours for the chair frames and mesh parts makes this collection highly customisable.

Une chaise d'opérateur avec des formes nettes et claires, proposée dans les versions rembourrée et maille. Elle représente une alternative valide aux chaises aux formes plus souples. La grande variété chromatique des châssis et des parties en maille rend cette collection fortement personnalisée.









cod. 691

**La versione con struttura bianca alleggerisce le forme e modifica completamente le proporzioni della seduta rendendola aperta ad ogni abbinamento cromatico.**

The white frame version lightens shapes and completely changes the chair proportions making it open to any colour combination.

La version avec le châssis en blanc légèreté aux formes et modifie complètement les proportions de la chaise en permettant une grande variété de combinaisons de couleurs.

←  
Gli schienali offrono diverse combinazioni cromatiche di strutture e reti. Cast rete si pone come modello ideale per un pubblico giovane e dinamico.

Backrests are available in different colour combinations of the frames and mesh parts. Mesh-finished Cast makes the ideal chair for young and dynamic users.

Les dossiers permettent des différentes combinaisons chromatiques de structures et maille. Cast en maille se propose comme modèle idéal pour un public jeune et dynamique.



cod. 529



# Ciak

CSR Las Mobili

Ciak è l'alternativa stilistica alle classiche sedute dalle forme tondeggianti. Lo schienale squadrato e imponente esprime l'evoluzione del design delle sedute operative.

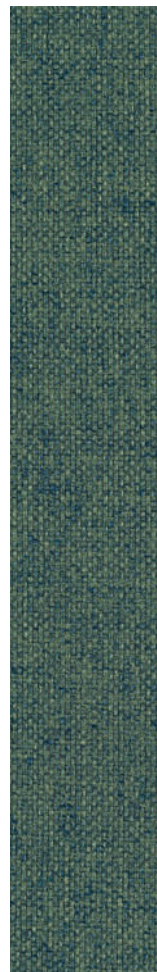
Ciak is a stylish alternative to classic chairs with rounded shapes. The squared and dominating backrest expresses the evolution in the design of office chairs.

Ciak est l'alternative stylistique aux classiques chaises arrondies. Le dossier carré et imposant exprime l'évolution du design des chaises de bureau.



# 081





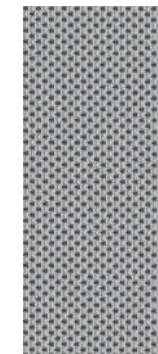
cod. 610

**La seduta in rete si impone per rigore formale e comfort. Lo schienale è valorizzato dal supporto portante posteriore e dall'elemento per la presa superiore dal poggiatesta.**

This mesh chair stands out for its formal line and for its comfort.

The backrest is enhanced by its supporting element, by its shaped top and by its headrest.

Cette chaise en maille a le charme de la rigueur formelle et au même temps du confort. Le dossier est valorisé par le support porteur postérieur, par l'élément de prise supérieur et par l'appuie-tête.



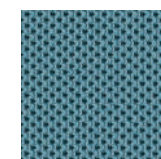
cod. 586



↑  
Seduta a slitta con struttura in tubo di acciaio cromato e schienale imbottito.

Cantilever chair with chrome-finished steel tube frame and upholstered backrest.

Chaise à traineau avec structure en tuyau en acier chromé et dossier rembourré.



cod. 593



**Ogni particolare esprime funzionalità e comfort: la rete, lo schienale ad altezza variabile, i braccioli regolabili e le meccaniche definiscono l'alto valore della seduta.**

Every single detail improves functionality and comfort. Mesh, adjustable backrest height, adjustable armrests and mechanism: all these elements add value to the design of this chair.

Chaque détail exprime fonctionnalité et confort: la maille, le dossier à hauteur variable, les accoudoirs réglables, les mécanismes, définissent la valeur de cette chaise.



# Prima

Massimo Costaglia



Una collezione completa di poltroncine operative con schienale imbottito o rete, braccioli regolabili e appoggio lombare.

La duplice soluzione di schienale permette un impiego variabile in base a diverse e personali esigenze funzionali o estetiche.

A complete collection of operative armchairs with padded or mesh backrests, adjustable armrests and lumbar support.

The dual backrest solution allows a variable use based on different and personal functional or aesthetic needs.

Une collection complète de fauteuils opératoires avec dossier rembourré ou en résille, accoudoirs réglables et support lombaire.

La solution de dossier double permet une utilisation variable en fonction de besoins fonctionnels ou esthétiques différents et personnels.





cod. 595

**Lo schienale in rete nera garantisce comfort e leggerezza. La poltroncina si smaterializza e assume un'immagine fortemente caratterizzata, tecnica e innovativa.**

The black mesh backrest guarantees comfort and lightness. The armchair dematerializes and assumes a strongly characterized, technical and innovative image.

Le dossier en maille noire garantit confort et légèreté. La silhouette du fauteuil s'efface et offre une ligne purée, à la fois technique et innovante.

→ Il bracciolo regolabile in altezza contribuisce alla corretta postura.  
The adjustable height of the armrest helps maintaining a correct posture.  
L'accoudoir à hauteur réglable facilite une posture correcte.



088



operative

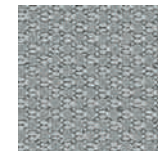


operative chairs



sièges de travail

cod. 622





# Helló

Baldanzi e Novelli

Modello di riferimento per il suo design e per l'ampiezza di gamma. Bella in ogni versione, dall'imbottita a quella con schienale in rete, fino alla cantilever.

L'impiego del poggiatesta la rende una poltrona di livello semi-direzionale comoda e performante.

A model which stands out as a reference point for its design and wide range available. Beautiful in any version, from the upholstered one to the mesh backrest, including the cantilever version.

The headrest turns this chair into a semi-executive chair, performing and comfortable.

Un modèle qui devient un point de référence pour sa conception et pour le grand choix que la gamme peut offrir. Elle est belle en toutes ses variations, de la version rembourrée à celle au dossier en maille, jusqu'au modèle cantilever.

L'utilisation de l'appuie-tête amène cette chaise au niveau semi-directionnel, confortable et performante.







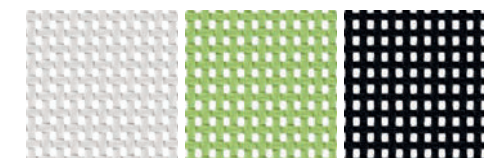
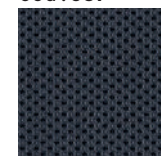
**Gli schienali in colore grigio, antracite e verde si prestano a perfetti abbinamenti con le reti nere, bianche e verdi e con i numerosi tessuti selezionati nel nuovo campionario.**

Grey, green and anthracite backrests provide perfect matching with black, white and green mesh and with the wide range of fabrics selected for this new collection.

Les dossiers en gris, vert ou en anthracite, se prêtent à des combinaisons parfaites avec les mailles noires et vertes et les plusieurs tissus sélectionnés pour le nouveau catalogue.



cod. 587



cod. 310

cod. 311

cod. 312



← Lo schienale in rete è proposto in tre varianti cromatiche.  
The mesh backrest is available in three colours.  
Le dossier en maille è proposé en trois différents couleurs.





cod. 504



←  
Slitta con schienale  
in plastica in due  
colori, con e senza  
rivestimento in  
tessuto.  
Cantilever chair with  
plastic backrest in  
two colours, with  
and without fabric  
finishing.  
Traineau avec dossier  
en plastique en deux  
couleurs, sans ou avec  
revêtement en tissu.



# Oscar

Massimo Costaglia

Oscar costituisce una famiglia completa di sedute completamente imbottite o con schienale in rete. Ideale negli ambienti di lavoro operativi, trova perfetto impiego anche negli ambienti direzionali in trittici costituiti dalla versione con poggiatesta e dalle sedute su slitta.

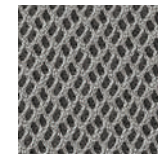
This is a complete collection of completely upholstered chairs with a mesh backrest. The perfect chair for the office environment but is makes a great chair also for executives, in combinations composed of the headrest version and chairs with a metal base frame.

Oscar fait partie d'une famille complète de chaises complètement rembourrées ou avec dossier en maille. Idéale pour les environnements de travail opérationnels, parfaitement utilisable aussi dans les contextes de direction avec combinaisons qui comprennent la version appuie-tête et sur traineau.



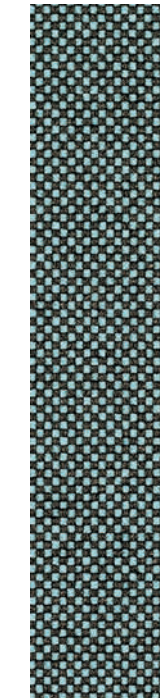


cod. 758



cod. 745

cod. 744



Lo schienale con scocca in due colori accoglie reti nere e grigie.

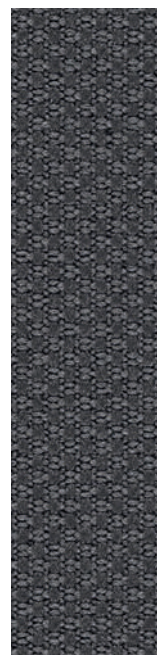
The backrest with its two colour frame holds black and grey mesh finishing.

Le dossier avec châssis en deux couleurs reçoit la maille noire ou grise.

La ricca cartella rivestimenti, consente abbinamenti del tutto nuovi fino all'impiego della rete per schienale e seduta imbottita.

The rich palette of finishes allows new combinations which include mesh backrests and upholstered seats.

La grande variété des revêtements permet des combinaisons complètement neuves, comme dans le cas de l'utilisation de la maille pour le dossier et du rembourrage pour l'assise.

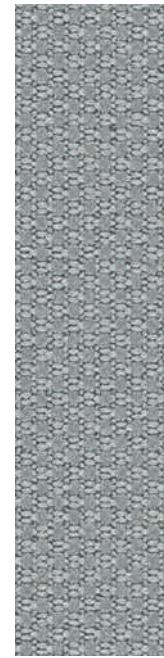


cod. 623

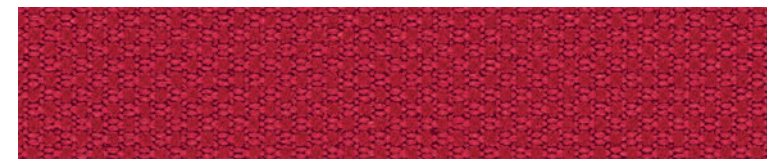


← La seduta su slitta mantiene i caratteri formali della poltroncina.  
The metal base frame version has the formal design of classic office chairs.  
La chaise avec traineau maintient les critères formels d'un fauteuil.





cod. 622



cod. 636



cod. 635



**La versione interamente imbottita completa la collezione, potenziando la forza espressiva dei rivestimenti.**

The fully upholstered version completes the collection and enhances the expressive power of the finishing.

La version complètement rembourré complète la collection, en augmentant la force expressive des revêtements.

**multiuso**  
*for all*  
*polyvalent*

# F01



Una collezione di sedute in polipropilene, con e senza imbottitura, progettata per molteplici impieghi grazie ai suoi accessori e alla vasta gamma di colori, di basi e scocche. Con le sue forme sobrie, è ideale per sale corsi, aree attesa, mense e uffici domestici.

A collection of polypropylene chairs, with and without upholstery, designed for multiple uses thanks to their accessories. Available in many colours of both base and frame. With its sober shapes, this model is ideal for training rooms, waiting areas, canteens and home offices.

Une collection de chaises en polypropylène, avec ou sans rembourrage, conçue pour de multiples utilisations grâce à ses accessoires et au grand choix des couleurs de bases et de châssis. Avec ses formes sobres, elle est idéal pour les salles de formation, les aires d'attente, les cantines et les bureaux chez soi.

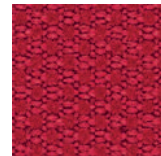






← Due versioni di basamento fisso, con gambe in tubo di acciaio e girevole su ruote.  
 Two versions for the fixed base with steel-tube legs or swivelling.  
 Deux versions de base fixe avec pieds en tuyau d'acier et pivotant sur roues.

cod. 636



cod. 693



# F02



Una monoscocca aperta ad ogni uso e ad ogni ambiente. Proposta in versione sedia e sgabello con strutture, a quattro gambe o a filo, che accolgono scocche in polipropilene in tre colori. Il cuscino imbottito arricchisce la forma e aumenta la comodità.

A single-frame structure, suitable to be used in any context and environment. Available in the chair and stool versions, with four-legged or flush frames, which support polypropylene shells in three colours. The upholstered cushion enriches the shape and increases comfort.

Un monocoque ouvert à tous les usages et à tous les environnements. Disponible dans les versions chaise et tabouret avec structures, à quatre pieds ou à fleur, qui reçoivent des éléments en polypropylène dans trois couleurs. Le coussin rembourré enrichit la forme et augmente le confort.



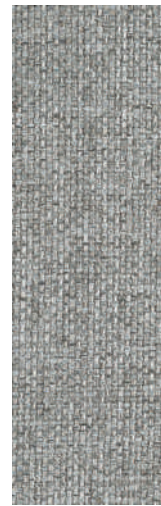
I piccoli elementi di giunzione permettono l'installazione delle sedute in file continue, favorendo un impiego sicuro anche in spazi ad uso collettivo.



cod. 526

The small joining elements allow the installation of the seats in continuous rows, favouring a safe use even in collective spaces.

Les petits éléments de jonction permettent l'installation des sièges en rangées continues, favorisant une utilisation sûre même dans des espaces pour l'usage collectif.



cod. 604



↑  
La seduta si arricchisce con il cuscinetto imbottito nei rivestimenti a catalogo.

The seat is embellished by the upholstered cushion with all the finishes included in the catalogue.

La chaise s'enrichit avec le coussin rembourré avec les finitions du catalogue.



# F03

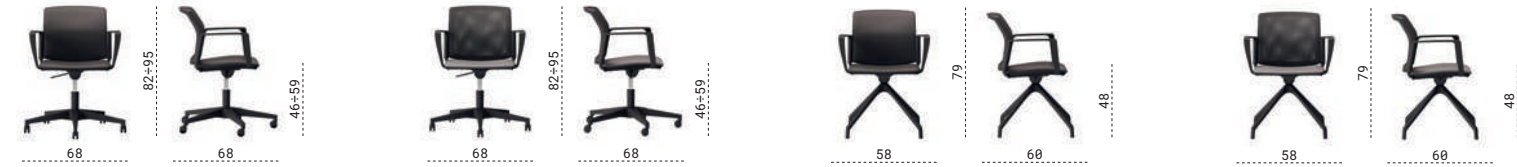
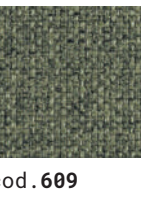


Il concetto di collezione completa è espresso perfettamente da F03, una poltroncina con e senza braccioli, proposta in polipropilene, con seduta e schienale imbottiti o con schienale in rete. Un'autentica multiuso progettata per funzioni ed esigenze differenti.

The concept of complete collection is perfectly expressed by F03, a small chair with or without armrests, available in polypropylene, with upholstered seat and backrest or with mesh backrest. A truly multi-purpose chair designed to perform different functions and meet many needs.

Le concept de collection complète est parfaitement exprimé par F03, un petit fauteuil avec ou sans accoudoirs, disponible en polypropylène, avec assise et dossier rembourrés ou avec dossier en maille. Une vraie chaise multi-usage conçue pour différentes fonctions et besoins.

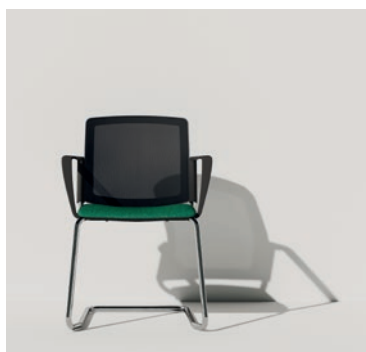




L'ampia dotazione di basi, a quattro gambe con e senza ruote, a slitta e girevoli con ruote, ampliano le possibilità di impiego incrementando le combinazioni estetiche e funzionali.

The wide range of available base models, with four legs, with or without wheels, with frame, swivelling wheels, expands the possible applications and increases aesthetic and functional combinations.

La riche gamme de bases, à quatre pieds, avec ou sans roues, avec des roues coulissantes et pivotantes, permet plusieurs possibilités d'utilisation, en augmentant les combinaisons esthétiques et fonctionnelles.



# F04

La collezione è caratterizzata dall'inconfondibile scocca sagomata e microforata in quattro colori. Il cuscino la completa, aumentandone le possibilità di abbinamento. Una seduta destinata a sale riunioni o aree break che, grazie ai quattro basamenti, amplia le sue possibilità di impiego.

This collection is characterised by its unique shaped shell, micro-perforated and available in four colours. The cushion enhances it and allows many combinations. A chair designed for meeting rooms or break areas, highly versatile thanks to its four base options.

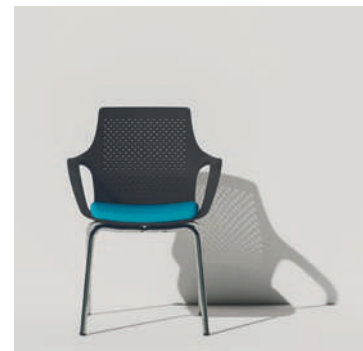
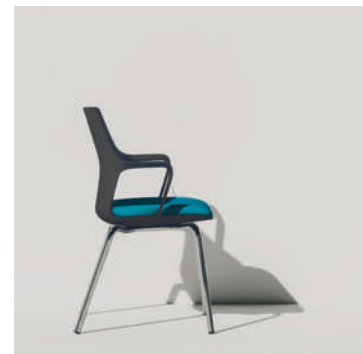
La collection est caractérisée par son châssis à la forme unique micro-perforé, disponible en quatre couleurs. Elle est complétée par le coussin, ce qui donne plus de possibilités de combinaisons. Chaise dessinée pour les salles de réunion ou les aires break qui, grâce aux quatre bases différentes, peut être utilisée dans plusieurs contextes.



**La comodità della monoscocca si sposa perfettamente con i quattro tipi di basi, ampliando l'impiego della seduta. Il cuscino è l'elemento che introduce il colore, variando ad ogni abbinamento lo stile della sedia e dell'ambiente circostante.**

La souplesse de la monocoque s'intègre parfaitement aux quatre types de base, permettant une utilisation variée de l'assise. Le coussin est l'élément qui introduit la couleur, en donnant une touche de style à la chaise et à l'environnement avec chaque combinaison.

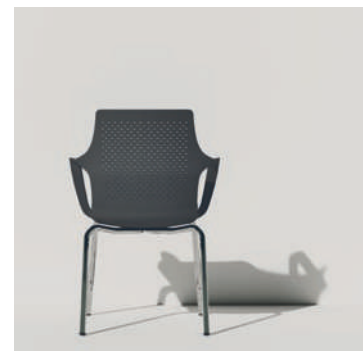
The softness of this single-frame model perfectly fits the four types of base, making this chair suitable for a number of applications. The cushion adds colour as well as a stylish touch to the chair and the surrounding environment, thanks to the many possible combinations.



↑ Versione riunione con base a quattro gambe in tubo di acciaio cromato.

Meeting room version with four-leg base in chrome finished steel tube.

Version réunion avec base à quatre pieds en tuyau d'acier chromé.



cod. 589



# Vedette

Scagnellato & Ferrarese



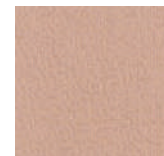
Una piccola sedia di grande valore formale. La sobrietà della scocca in tinta con la base, a slitta e a 4 gambe, la rende perfetta in ogni ambiente. Il comfort della seduta aumenta grazie all'inserimento del cuscino.

A small chair with high formal value. This sober colour-matching shell, with its cantilever or four-leg base, make it perfect for any environment. The seat comfort is enhanced by the cushion.

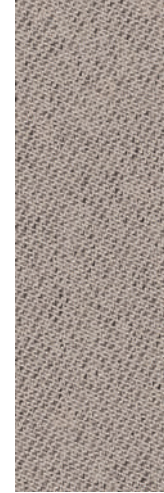
Une petite chaise de grande valeur formelle. La sobriété du châssis en couleur, avec sa base à traineau et les quatre pieds, rend cette chaise idéale dans n'importe quelle ambiance. Grand confort de l'assise grâce au coussin.







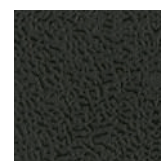
cod. 960



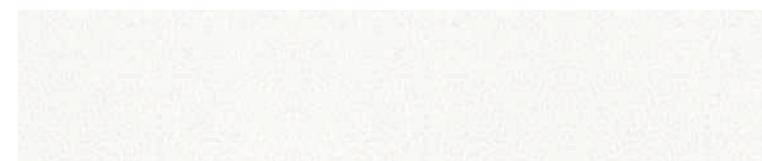
cod. 677

**I quattro colori delle scocche ampliano le possibilità di abbinamento che variano ulteriormente, inserendo cuscini imbottiti nei rivestimenti a catalogo.**

The four colours of the shell allow many combinations, and even more so with the upholstered cushions in all the finishes of the catalogue.



cod. 955



cod. 909

Les quatre couleurs des châssis permettent beaucoup de combinaisons avec les coussins rembourrés et leur revêtements du catalogue, qui donnent variété.



cod. 941



# Superotto



Lo sgabello caratterizza gli spazi per la riunione veloce o per la pausa.

L'oggetto e l'atmosfera che contribuisce a creare cambiano in base all'abbinamento delle diverse basi, in filo di acciaio o in legno, con le sedute imbottite nei vari rivestimenti.

The stool characterizes spaces for a quick meeting or for a break.

The object and the atmosphere it helps to create change according to the combination of the different bases, in steel wire or wood, with the upholstered seats in various coverings.

Le tabouret est idéal pour une réunion rapide ou pour une pause.

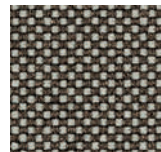
Ce produit et l'ambiance contribuent à créer le changement en fonction de la combinaison des différents piètements, en fil d'acier ou en bois, avec les sièges rembourrés dans les différents revêtements.



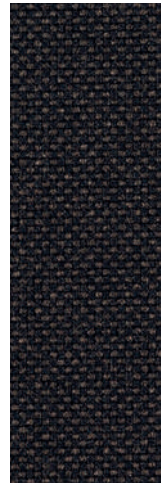




cod. 738



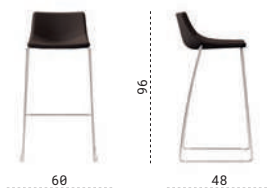
cod. 737



**Il basamento in versione filo di acciaio cromato e legno crea due importanti alternative estetiche, favorendo abbinamenti diversi. Lo sgabello varia completamente la sua immagine e le proporzioni complessive, rendendolo adatto ad ambienti di lavoro o ad aree per la pausa.**

The chrome-finished steel wire and the matching with wood create an impressive effect and allow interesting combinations. This stool changes its image and overall proportions and becomes perfect for work or break areas.

La base en version en fil d'acier chromé et bois crée deux importantes alternatives esthétiques et favorisent des différentes combinaisons. Le tabouret change complètement son image et ses proportions, ce qui le rend idéal pour les aires de travail ou pour prendre une pause.



# Provino

Scagnellato & Ferrarese



Uno sgabello pratico e versatile, ideale per riunioni veloci o per un'operatività dinamica.

Il fruitore, assumendo posizioni differenti per mantenere l'equilibrio in fase d'uso, coinvolge la muscolatura dorsale e lombare, ottenendo indubbi benefici posturali.

A practical and versatile stool, ideal for quick meetings or for dynamic operations.

The user, assuming different positions to maintain balance during use, involves the back and lumbar muscles, obtaining undoubted postural benefits.

Un tabouret pratique et polyvalent, idéal pour des réunions rapides ou pour des opérations dynamiques.

L'utilisateur, prenant différentes positions pour maintenir l'équilibre lors de l'utilisation, implique les muscles du dos et des lombaires, obtenant des avantages posturaux incontestables.





**Elevazione, rotazione e oscillazione sono i movimenti della seduta che ne consentono un impiego sempre diverso all'interno di innovativi smart offices.**

L'élevation, la rotation et l'oscillation sont les mouvements du siège qui permettent une utilisation en constante évolution dans les bureaux innovants.

Elevation, rotation and oscillation are the movements of the seat that allow for an ever-changing use within innovative smart offices.



cod. 616



**attesa & riunione**  
*waiting & meeting*  
*attente & réunion*

# F01 Bench

La collezione F01 si completa con la versione su barra, da due a quattro posti, a doppia proposta di basi: a "V" in nylon e a "Y" in alluminio pressofuso. Le due soluzioni offrono varianti estetiche alternative che ne aumentano le possibilità di impiego.

The F01 collection is completed by the bar-mounted version, from two to four seats, with two options for the base element: "V-shaped" in nylon and "Y-shaped" in die-cast aluminium. These two solutions suggest aesthetic variations that increase its versatility.

La collection F01 est complétée par la version sur barre, de deux à quatre places, avec une double base : « V », en nylon et « Y » en aluminium moulé sous pression. Les deux solutions offrent des variations esthétiques qui en augmentent les possibilités d'utilisation.

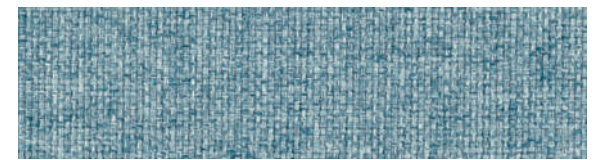




**Le sedute su barra permettono di ottimizzare lo spazio offrendo la possibilità di allestire sale d'attesa confortevoli e accoglienti.**

**Les chaises sur barre permettent d'optimiser l'espace tout en donnant la possibilité de créer des salles d'attentes confortables et accueillantes.**

Bar-mounted seats optimise space and create comfortable and welcoming waiting areas.



cod. 611

# F03 Bench

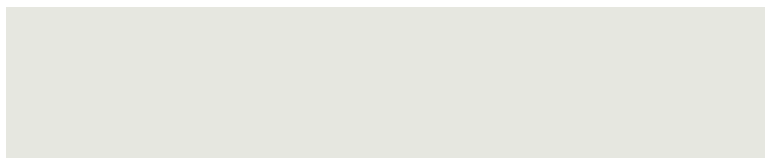


F03 si pone come vero e proprio sistema di attese su barra, grazie alla molteplicità di sedute, di basi ed accessori impiegabili.  
La variabilità di combinazioni estetiche e funzionali permette di soddisfare le più diverse esigenze connesse con i moderni spazi di lavoro.

F03 stands out as a complete system of bar-mounted waiting chairs, thanks to many options available for seats, bases and accessories.  
The variability of these aesthetic and functional combinations makes it possible to satisfy the most diverse needs of those who want to work in a truly modern environment.

F03 se présente comme un véritable système d'attente sur barre, grâce à la multiplicité des sièges, bases et accessoires qu'on peut utiliser.  
La variabilité des combinaisons esthétiques et fonctionnelles permet de satisfaire les besoins les plus divers liés aux espaces de travail les plus modernes.





cod. 912

**La collezione persegue l'obiettivo di aumentare il numero dei posti a sedere e nel contempo di migliorare la comodità degli ospiti in attesa.**

La collection a pour but d'augmenter le nombre des places et au même temps d'améliorer le confort des visiteurs en attente.

This collection aims at increasing the number of seats while improving the guests' comfort.



# Regia

CSR Las Mobili



Poltroncina imbottita per la riunione o l'attesa. La struttura integrata di seduta, schienale e braccioli garantiscono un comfort ottimale in ogni impiego.

La forma valorizza i rivestimenti a campionario, favorendo gli abbinamenti con colori in scala cromatica o tessuti diversi.

Upholstered armchair for meeting rooms or waiting areas.

The integrated structure of the seat, backrest and armrests ensures optimal comfort in any context.

Its shape enhances the coverings, suggesting colour combinations in matching shades or using different fabrics.

Chaise rembourré pour la réunion ou l'attente.

La structure intégrée de l'assise, du dossier et des accoudoirs garantit un confort optimal à chaque utilisation.

La forme améliore les revêtements disponibles, en favorisant les combinaisons chromatiques ou en utilisant des tissus différents.





Le tre basi, in legno, in filo di acciaio e in alluminio a 4 razze, consentono alla poltroncina di rispondere ad esigenze estetiche e differenti destinazioni d'uso.

The three base options wood, steel wire and 4 spokes aluminium base, make this chair ideal to meet different aesthetic needs and functions.



Les trois bases, en bois, en fil d'acier et en aluminium à 4 rayons, permettent à cette chaise de répondre à besoins esthétiques et utilisations différentes.

# Movie

CSR Las Mobili

Un pozzetto classico per la riunione o la conferenza, anche in versione pieghevole. Le forme sobrie e compatte lo rendono impiegabile in ogni allestimento classico o moderno.

A classic tub chair for meeting or conference rooms, also available in the folding version. Its sober and compact shapes make it suitable for any classic or modern setting.

Chaise tonneau pour les réunions ou les conférences, également disponible en version pliante. Les formes sobres et compactes la rendent approprié pour n'importe quel arrangement, classique ou moderne.

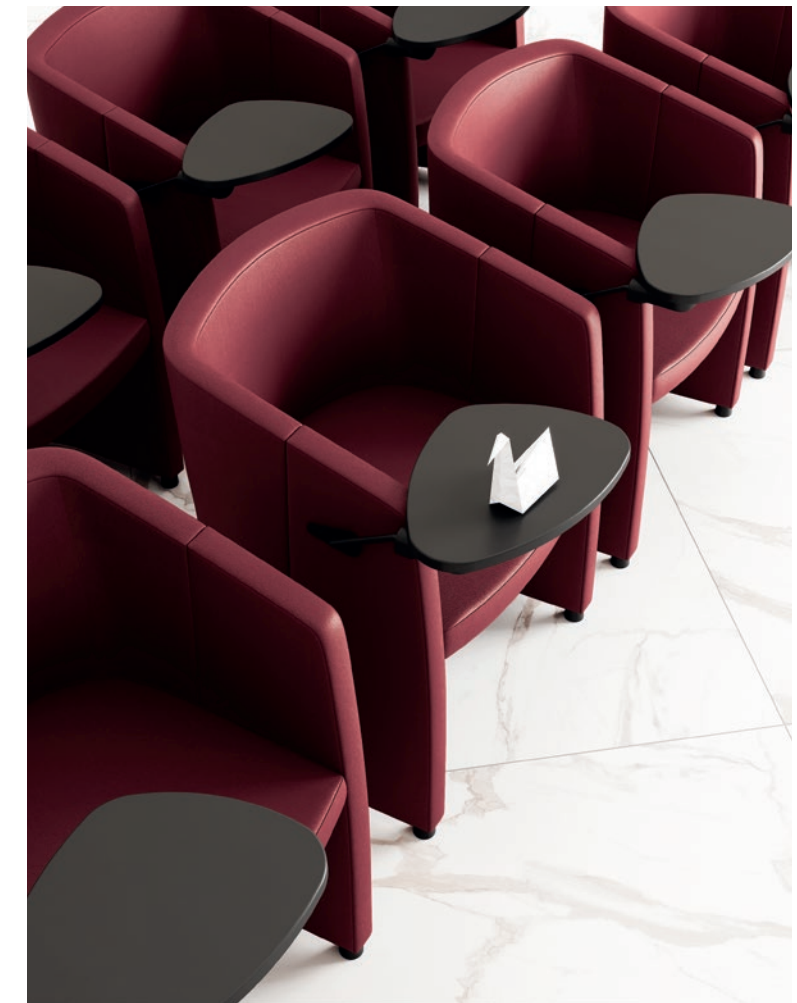
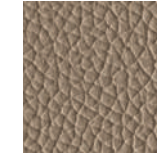




cod. 780



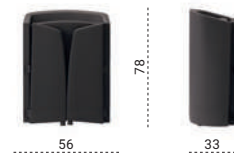
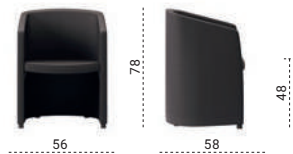
cod. 778



**Le linee essenziali unite alla selezione di rivestimenti a catalogo fanno di Movie una perfetta collezione di imbottiti per la riunione.**

These essential lines matched with the selection of available finishes turn Movie into a perfect collection of upholstered seats for meeting rooms.

Les lignes essentielles revêtues avec les finitions du catalogue font de Movie une collection parfaite d'éléments rembourrés pour les salles de réunion.



lounge



# Jera

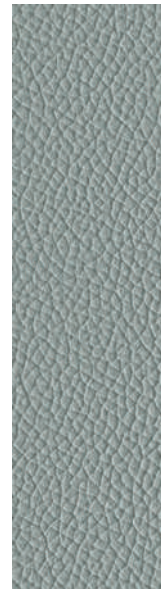
Orlandini Design

Un sofà comodo dalle proporzioni importanti, disegnato per spazi rappresentativi di grande eleganza. Le forme pure e compatte ne consentono l'inserimento in ogni ambiente, indipendentemente dallo stile. Jera mantiene e trasmette la sua identità.

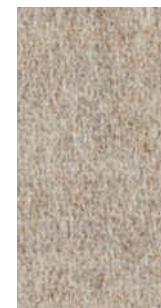
A comfortable sofa with outstanding proportions, designed for representative spaces of great elegance. Its neat and compact line makes it suitable for any environment, regardless of style. Jera maintains and communicates its distinguished identity.

Un canapé confortable aux proportions importantes, conçu pour des espaces représentatifs et élégants. Les formes pures et compactes permettent de l'insérer dans n'importe quel environnement, quel que soit le style ou le contexte. Jera maintient et transmet son identité.





cod. 774



cod. 645



cod. 775

**Il piedino verniciato alleggerisce gli appoggi, mantenendo alto il livello di eleganza del modello. Attenzione e cura fino ai più piccoli dettagli.**

Le pied peint donne légèreté aux appuis et garantit le niveau d'élégance du modèle. Attention et soin dans les moindres détails.

Painted feet to lighten the frame, confirming the impressive elegance of this model. Great attention and care to the smallest details.

Collezione geometrica il cui carattere monolitico è sorprendentemente attenuato dalle rastremature dei braccioli e dai piedi ad anello in acciaio cromo lucido. Poltrona, divano a due e tre posti per spazi da attesa comodi ed eleganti.

A geometric collection whose monolithic character is surprisingly softened by the tapered armrests and the ring feet in polished chrome-plated steel. Armchair, two- and three-seater sofa: for comfortable and elegant waiting areas.

Collection géométrique dont le caractère monolithique est étonnamment atténué par la silhouette des accoudoirs et par les pieds annulaires en acier chromé poli. Fauteuil et canapé à deux et trois places pour des zones d'attente confortables et élégantes.

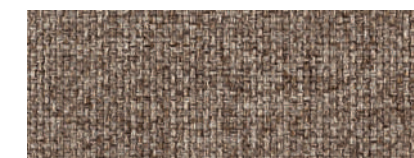




**Le ampie superfici sono interrotte dalle cuciture lineari poste su seduta e schienale. Segni e linee che determinano lo stile inconfondibile di Trend.**

Large surfaces, outlined and interrupted by linear seams on the seat and backrest. Marks and lines that characterise the unmistakable style of the Trend collection.

Les grandes surfaces sont interrompues par les coutures linéaires sur l'assise et sur le dossier. Signes et lignes qui déterminent le style unique de Trend.



cod. 607



cod. 609

# Domus

CSR Las Mobili

Una collezione per l'attesa dalle linee inconfondibili. Il telaio in acciaio verniciato contiene elementi imbottiti, perfettamente rivestiti. L'evoluzione di modelli classici per l'attesa, reinterpretati secondo uno stile rigoroso e moderno.

A unique collection for waiting areas. The painted steel frame encloses the neatly finished upholstered parts. The evolution of classic models for waiting areas, re-interpreted with a rigorous and modern touch.

Une collection pour les aires d'attente avec une ligne distinguée. Un châssis en acier peint qui contient des éléments rembourrés, avec une finition parfaite. L'évolution des modèles classiques pour les aires d'attente, réinterprétés selon un style rigoureux et moderne.



L'impiego di pelle o tessuto è sempre appropriato in Domus. Le forme geometriche esaltano ogni rivestimento, dal più compatto al più morbido.

Both leather and fabric are used here to confirm Domus' elegance. Geometric shapes that highlight all finishings, from the most compact to the softest.

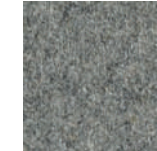
L'utilisation de cuir ou de tissu est toujours appropriée sur Domus. Les formes géométriques mettent en évidence tout type de revêtement, du plus compact au plus souple.



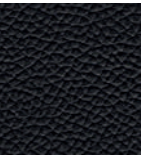
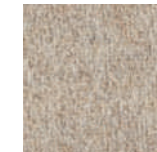
cod. 643



cod. 642



cod. 645



cod. 776



# Set

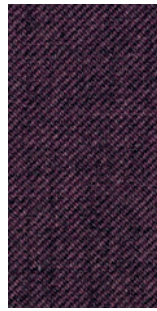
CSR Las Mobili

Set è un modello di grande eleganza, ideale per spazi di attesa accoglienti e riservati dalle forme morbide e avvolgenti. Il piede cromato sembra scomparire, per esaltare le parti imbottite.

Set is a model of great elegance, perfect for welcoming and reserved waiting areas, thanks to its soft and welcoming shape. Its chrome feet are almost invisible, to enhance the upholstered parts.

Set est un modèle d'une grande élégance, idéal pour les zones d'attente accueillantes et réservées, avec ses formes souples et enveloppantes. Le pied chromé semble disparaître, pour mettre en évidence les parties rembourrées.





cod. 703

**Il piedino in finitura cromo  
aumenta la leggerezza  
dell'appoggio che crea un  
piacevole effetto di  
sospensione dal pavimento.**

The chrome-finished foot  
gives a sense of lightness  
and a pleasant effect as if  
the chair were floating over  
the floor.



cod. 700

Le pied avec finition chromé  
augmente la légèreté de  
l'appui qui crée un effet  
agréable de suspension.





smart office

# Divo

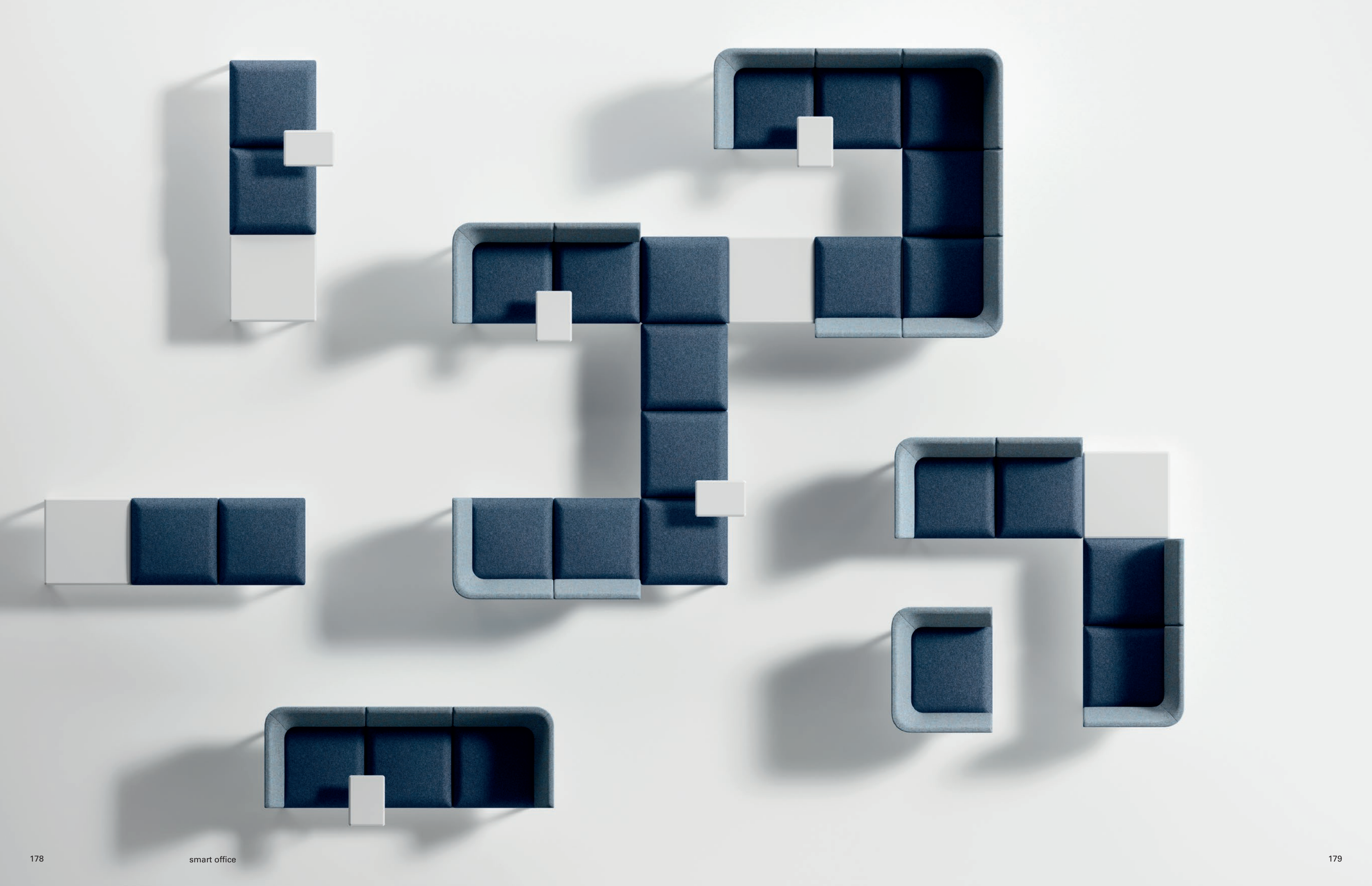
Orlandini Design

Divo esprime l'evoluzione della seduta componibile da attesa e contemporaneamente il cambiamento del modo di lavorare in ufficio. L'esigenza di lavorare al computer comodamente seduti o di effettuare riunioni da remoto o in presenza, in condizioni diverse dalla classica sala riunioni, è soddisfatta da sedute modulari variamente aggregabili. Gli schienali alti e bassi garantiscono differenti livelli di riservatezza, in base alle specifiche esigenze, oltre alla possibilità di essere completati con piani di appoggio di vario tipo.

Divo expresses the evolution of modular waiting chairs as well as a new way to work in the office. We need to be comfortable when working at our PC, to attend virtual or real meetings, in situations that are different from a typical meeting room, and these versatile modular chairs make our life much easier. High and low backrests provide different levels of privacy, depending on your specific needs, besides allowing to be combined with different kinds of worktops.

Divo exprime l'évolution de la chaise d'attente modulaire et en même temps le changement dans les modalités de travail au bureau. L'exigence de travailler à l'ordinateur confortablement assis ou d'organiser des réunions à distance ou en personne, dans des conditions différentes d'une salle de réunion classique, est satisfaite par des chaises modulaires qui peuvent être combinés de différentes manières. Les dossiers, hauts et bas, garantissent des différents niveaux d'intimité, selon les exigences du moment, et ils peuvent aussi être complétés avec différentes types de plateaux.







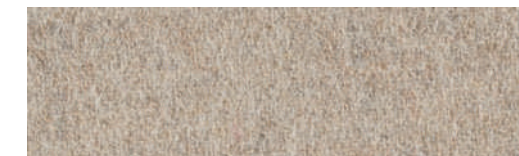
**Piccoli piani accessori, autoportanti e facilmente riposizionabili, completano la collezione rendendola adeguata alle esigenze funzionali del lavoro agile.**

Small ancillary worktops, self-supporting and easily movable, complete this collection to meet the functional needs of agile work.

Des petits plateaux accessoires, autoporteurs et facilement re-configurables, complètent la collection et la rendent fonctionnel au travail agile.



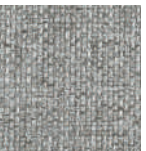
cod. 646



cod. 645



cod. 604

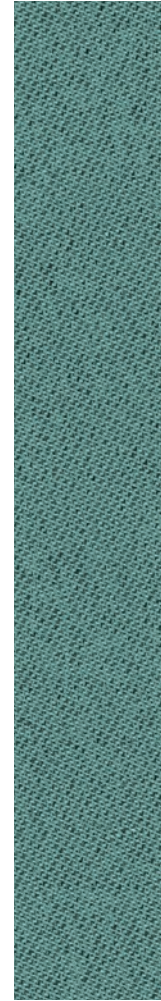




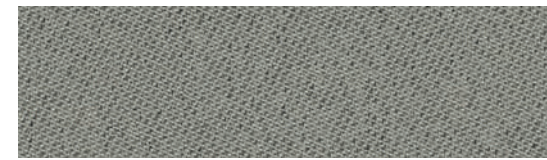
La modularità degli schienali consente di variare l'altezza, differenziando assorbimento acustico e di riservatezza.

The modularity of backrests allows to change their height, to meet different needs for sound absorption and privacy.

La modularité des dossiers permet de varier la hauteur, et au même temps d'obtenir différents niveaux d'absorption acoustique et d'intimité.



cod. 681



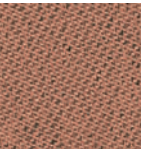
cod. 675



↑  
Composizione per riunioni informali riservate con schienali alti.  
Informal and private meeting composition with high backrests.  
Composition pour réunions informelles avec dossiers hauts.



cod. 684





# Flags

Orlandini Design

Un sistema integrato di piani, sedute e schermi acustici che soddisfa le esigenze della moderna operatività in ufficio. Soluzioni dal design innovativo in cui riunioni, lavoro al computer, pausa, attesa avvengono in angoli riservati e performanti.

An integrated system of tops, seats and acoustic screens that meets the needs of modern office operations. Innovative design solutions where meetings, computer work, breaks and waiting take place in private and performing spaces.

Un système intégré de plateaux, chaises et panneaux acoustiques qui répond aux besoins du bureau moderne. Solutions avec un design innovant dans lequel les réunions, le travail à l'ordinateur, les pauses et l'attente se déroulent dans un environnement privé et performant.

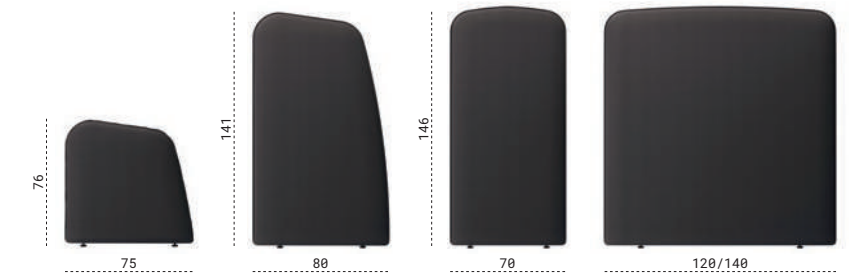








cod. 644

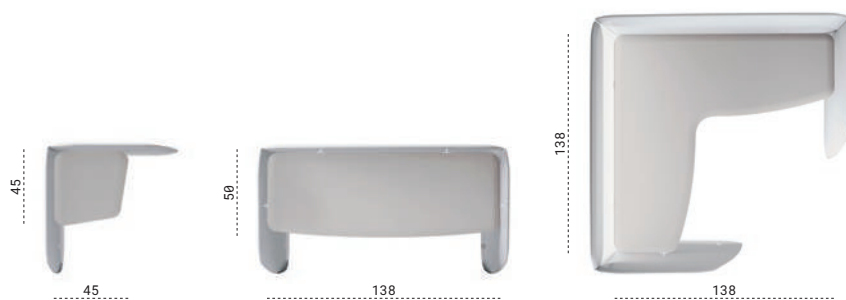


**Le postazioni di lavoro tradizionali diventano angoli riservati dal notevole comfort acustico.**

Traditional work stations turn into private corners with very remarkable sound absorption.

Les postes de travail traditionnelles deviennent des coins privés à haut confort acoustique.

cod. 645



**Isole operative dalle diverse configurazioni dove lavorare comodamente seduti o in piedi. Uffici, biblioteche, sale d'attesa cambiano forma e funzione.**

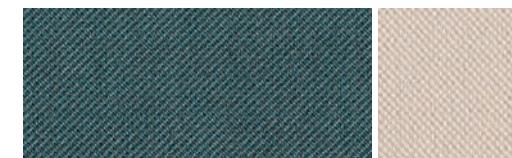
Operational islands available in different configurations to let you work comfortably seated or standing. Offices, libraries, waiting rooms change their shape and function.

Iles opérationnelles avec configurations différentes où on peut travailler en plein confort, assis ou debout. Bureaux, bibliothèques, salles d'attente qui changent leur forme et fonction.



cod. 645

→ Composizioni per la lettura o la conversazione telefonica riservata.  
Ideal combinations for reading or for private phone conversations.  
Compositions pour la lecture ou les entretiens téléphoniques confidentiels.



cod. 696

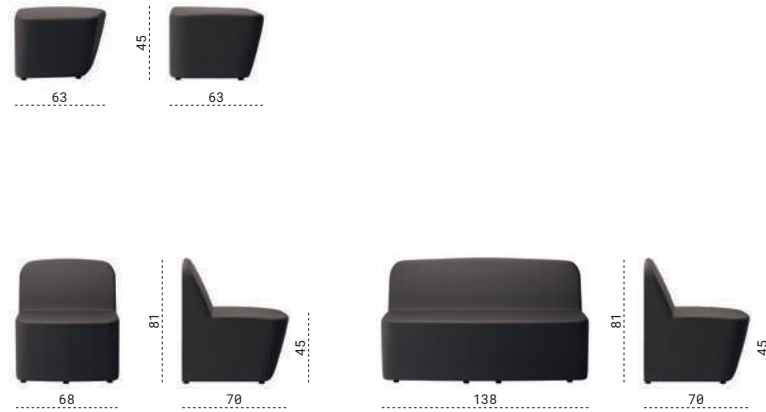
cod. 689



**Poltrone e divani monocromatici o bicolore su cui, grazie ai tavoli satellite, comodità ed operatività convivono perfettamente.**

Monochromatic or two-coloured armchairs and sofas on which, thanks to the satellite tables, comfort and functionality coexist perfectly.

Fauteuils et sofas monochromatiques ou en bi-couleur avec tables satellite pour une convivialité parfaite.





**finiture**  
finishes  
finitions



|                                                                                                     | Poli | Eco-Pelle | Crepe | Stretch | Melange | Trevi | Lana | Crazy By Flukso | Chili By Gabriel | Taylor FR. By Flukso | Go Check By Gabriel | Crisp By Gabriel | Pelle | Rete Round | Rete Break | Rete Gabriel | Tecnopolimeri | Tecnopolimeri | Tecnopolimeri | Tecnopolimeri | Tecnopolimeri | Tecnopolimeri |
|-----------------------------------------------------------------------------------------------------|------|-----------|-------|---------|---------|-------|------|-----------------|------------------|----------------------|---------------------|------------------|-------|------------|------------|--------------|---------------|---------------|---------------|---------------|---------------|---------------|
| Category                                                                                            | A    | B         | B     | D       | D       | D     | E    | E               | E                | F                    | G                   | I                | H     | R1         | R2         | R3           | T1            | T2            | T3            | T4            | T5            | T6            |
| <b><u>direzionali</u></b><br><i>executive</i><br><i>fauteuils de direction</i>                      |      |           |       |         |         |       |      |                 |                  |                      |                     |                  |       |            |            |              |               |               |               |               |               |               |
| Lead                                                                                                |      | •         |       |         |         |       | •    | •               | •                | •                    | •                   | •                | •     |            |            |              |               |               |               |               |               |               |
| Jera                                                                                                |      | •         |       |         | •       |       | •    | •               | •                | •                    | •                   | •                | •     |            |            |              |               |               |               |               |               |               |
| Scena                                                                                               |      | •         |       |         | •       | •     | •    | •               | •                | •                    | •                   | •                | •     |            |            |              |               |               |               |               |               |               |
| Neo Chair                                                                                           |      | •         |       |         |         |       |      | •               |                  | •                    | •                   | •                | •     |            |            |              |               |               |               |               |               |               |
| Athena                                                                                              |      | •         | •     |         | •       | •     | •    | •               |                  | •                    | •                   | •                | •     |            |            |              |               |               |               |               |               |               |
| Formen                                                                                              |      | •         | •     |         | •       | •     | •    | •               |                  | •                    | •                   | •                | •     |            |            |              |               |               |               |               |               |               |
| Galassia                                                                                            | •    | •         | •     |         | •       | •     | •    | •               |                  | •                    | •                   | •                | •     |            |            |              |               |               |               |               |               |               |
| <b><u>operative</u></b><br><i>operative chairs</i><br><i>sièges de travail</i>                      |      |           |       |         |         |       |      |                 |                  |                      |                     |                  |       |            |            |              |               |               |               |               |               |               |
| Sistema                                                                                             | •    | •         | •     | •       | •       | •     |      | •               |                  | •                    | •                   | •                |       |            |            |              |               |               |               |               |               |               |
| Sistema_Rete                                                                                        | •    | •         | •     | •       | •       | •     |      | •               |                  | •                    | •                   | •                |       | •          |            |              |               |               |               |               |               |               |
| Cast                                                                                                | •    | •         | •     | •       | •       | •     |      | •               | •                | •                    | •                   | •                |       |            |            |              |               |               |               |               |               |               |
| Cast_Rete                                                                                           | •    | •         | •     | •       | •       | •     |      | •               | •                | •                    | •                   | •                |       | •          |            |              |               |               |               |               |               |               |
| Ciak                                                                                                | •    | •         | •     | •       | •       | •     |      | •               |                  | •                    | •                   | •                |       |            |            |              |               |               |               |               |               |               |
| Ciak_Rete                                                                                           | •    | •         | •     | •       | •       | •     |      | •               |                  | •                    | •                   | •                |       | •          |            |              |               |               |               |               |               |               |
| Prima                                                                                               | •    | •         | •     | •       | •       | •     |      | •               | •                | •                    | •                   | •                |       |            |            |              |               |               |               |               |               |               |
| Prima_Rete                                                                                          | •    | •         | •     | •       | •       | •     |      | •               | •                | •                    | •                   | •                |       | •          |            |              |               |               |               |               |               |               |
| Hellò                                                                                               | •    | •         | •     | •       | •       | •     |      | •               | •                | •                    | •                   | •                |       |            |            |              |               |               |               |               |               |               |
| Hellò_Rete                                                                                          | •    | •         | •     | •       | •       | •     |      | •               | •                | •                    | •                   | •                |       | •          |            |              |               |               |               |               |               |               |
| Oscar                                                                                               | •    | •         | •     | •       | •       | •     |      | •               | •                | •                    | •                   | •                |       |            |            |              |               |               |               |               |               |               |
| Oscar_Rete                                                                                          | •    | •         | •     | •       | •       | •     |      | •               | •                | •                    | •                   | •                |       |            |            | •            |               |               |               |               |               |               |
| <b><u>multiuso</u></b><br><i>for all</i><br><i>polyvalent</i>                                       |      |           |       |         |         |       |      |                 |                  |                      |                     |                  |       |            |            |              |               |               |               |               |               |               |
| F01                                                                                                 | •    | •         | •     | •       | •       | •     |      |                 |                  |                      |                     |                  |       |            |            |              | •             |               |               |               |               |               |
| F02                                                                                                 | •    | •         | •     | •       | •       | •     |      |                 |                  |                      |                     |                  |       |            |            |              |               | •             |               |               |               |               |
| F03                                                                                                 | •    | •         | •     | •       | •       | •     |      |                 |                  |                      |                     |                  |       |            |            |              |               |               | •             |               |               |               |
| F04                                                                                                 | •    | •         | •     | •       | •       | •     | •    |                 | •                | •                    | •                   | •                |       |            |            |              |               |               |               | •             |               |               |
| Vedette                                                                                             | •    | •         | •     | •       | •       | •     | •    |                 | •                | •                    | •                   | •                |       |            |            |              |               |               |               |               |               | •             |
| Superotto                                                                                           | •    | •         | •     | •       | •       | •     | •    |                 | •                | •                    | •                   | •                |       |            |            |              |               |               |               |               |               | •             |
| Provino                                                                                             | •    | •         | •     | •       | •       | •     |      |                 |                  |                      |                     |                  |       |            |            |              |               |               |               |               |               | •             |
| <b><u>attesa &amp; riunione</u></b><br><i>waiting &amp; meeting</i><br><i>attente &amp; réunion</i> |      |           |       |         |         |       |      |                 |                  |                      |                     |                  |       |            |            |              |               |               |               |               |               |               |
| F01 Bench                                                                                           | •    | •         | •     | •       | •       | •     |      |                 |                  |                      |                     |                  |       |            |            |              | •             |               |               |               |               |               |
| F03 Bench                                                                                           | •    | •         | •     | •       | •       | •     |      |                 |                  |                      |                     |                  |       |            |            |              |               |               | •             |               |               |               |
| Regia                                                                                               | •    | •         | •     | •       | •       | •     | •    | •               | •                | •                    | •                   | •                | •     |            |            |              |               |               |               |               |               |               |
| Movie                                                                                               | •    | •         | •     | •       | •       | •     | •    | •               | •                | •                    | •                   | •                | •     |            |            |              |               |               |               |               |               |               |
| <b><u>lounge</u></b>                                                                                |      |           |       |         |         |       |      |                 |                  |                      |                     |                  |       |            |            |              |               |               |               |               |               |               |
| Jera                                                                                                |      | •         |       |         | •       |       | •    | •               | •                | •                    | •                   | •                | •     |            |            |              |               |               |               |               |               |               |
| Trend                                                                                               | •    | •         | •     |         | •       | •     | •    | •               | •                | •                    | •                   | •                | •     |            |            |              |               |               |               |               |               |               |
| Domus                                                                                               | •    | •         | •     |         | •       | •     | •    | •               | •                | •                    | •                   | •                | •     |            |            |              |               |               |               |               |               |               |
| Set                                                                                                 | •    | •         | •     |         | •       | •     | •    | •               | •                | •                    | •                   | •                | •     |            |            |              |               |               |               |               |               |               |
| <b><u>smart office</u></b>                                                                          |      |           |       |         |         |       |      |                 |                  |                      |                     |                  |       |            |            |              |               |               |               |               |               |               |
| Divo                                                                                                |      |           |       | •       | •       | •     | •    |                 | •                | •                    | •                   | •                |       |            |            |              |               |               |               |               |               |               |
| Flags (panels)                                                                                      |      |           |       | •       |         |       | •    |                 |                  |                      |                     |                  |       |            |            |              |               |               |               |               |               |               |
| Flags (sofà)                                                                                        |      |           |       | •       | •       | •     | •    |                 | •                | •                    | •                   | •                |       |            |            |              |               |               |               |               |               |               |

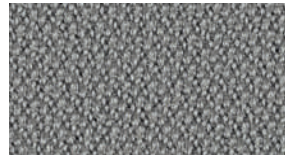
## Cat. A

### Poli

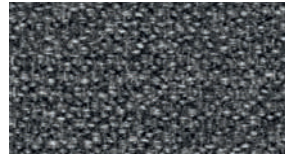
•100% Polipropilene F.R.  
•250 gr/m<sup>2</sup> (peso)  
•Martindale 50.000 cicli  
•Ignifugo classe 1

•100% Polypropylene F.R.  
•250 gr/m<sup>2</sup> (weight)  
•Martindale 50.000 turns  
•Fire-retardant class 1  
(one)

•100% Polypropylene F.R.  
•250 gr/m<sup>2</sup> (poids)  
•Martindale 50.000  
•Ignifuge classe 1



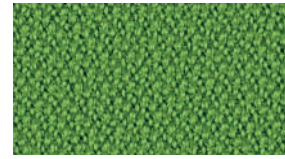
**Cod.475**  
Grigio  
Grey  
Gris



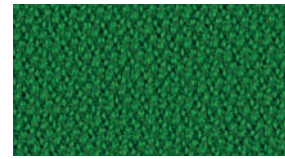
**Cod.476**  
Grigio Melange  
Melange Grey  
Gris Mélange



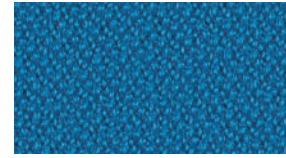
**Cod.477**  
Nero  
Black  
Noir



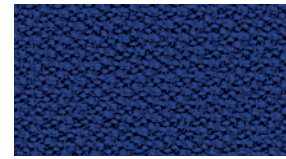
**Cod.478**  
Verde Chiaro  
Light Green  
Vert Clair



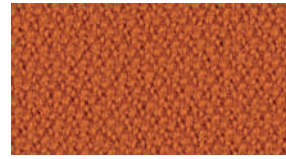
**Cod.479**  
Verde  
Green  
Vert



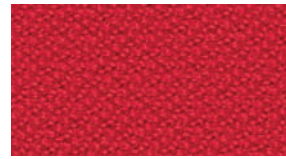
**Cod.480**  
Azzurro  
Azure  
Azur



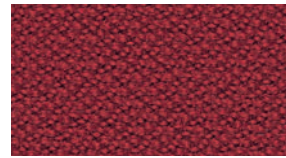
**Cod.481**  
Blu  
Blue  
Bleu



**Cod.482**  
Arancio  
Orange  
Orange



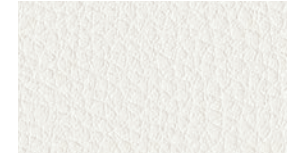
**Cod.483**  
Rosso  
Red  
Rouge



**Cod.484**  
Bordeaux  
Bordeaux  
Bordeaux

## Cat. B

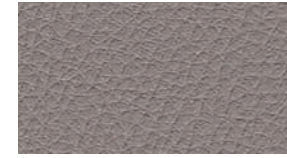
### Eco-Pelle



**Cod.503**  
Bianco  
White  
Blanc



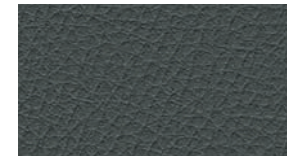
**Cod.507**  
Avorio  
Ivory  
Ivoire



**Cod.504**  
Grigio  
Grey  
Gris



**Cod.508**  
Tabacco  
Tobacco  
Tabac



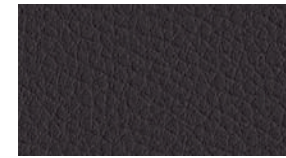
**Cod.505**  
Ardesia  
Slate  
Ardoise



**Cod.509**  
Marrone  
Brown  
Marron



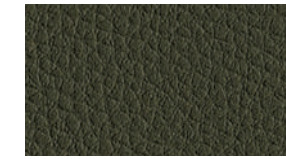
**Cod.506**  
Nero  
Black  
Noir



**Cod.510**  
Testa di Moro  
Dark Brown  
Marron Foncé



**Cod.511**  
Verde Acido  
Acid Green  
Vert Acide



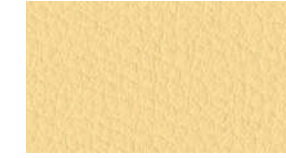
**Cod.512**  
Muschio  
Moss Green  
Vert Mousse



**Cod.513**  
Avio  
Navy Blue  
Bleu Aviateur



**Cod.514**  
Blu  
Blue  
Bleu



**Cod.515**  
Giallo  
Yellow  
Jaune



**Cod.516**  
Rosso  
Red  
Rouge



**Cod.517**  
Granata  
Garnet  
Grenat

•**Composizione fibrosa:**  
65% Poliestere  
35% Cotone  
•**Composizione globale:**  
85% PVC  
10% Poliestere  
5% Cotone  
•600 gr/m<sup>2</sup> (peso)  
•Martindale 51.200 cicli  
•Ignifugo classe 1

•**Fibrous composition:**  
65% Polyester  
35% Cotton  
•**Global composition:**  
85% PVC  
10% Polyester  
5% Cotton  
•600 gr/m<sup>2</sup> (weight)  
•Martindale 51.200 turns  
•Fire-retardant class 1  
(one)

•**Composition fibreuse:**  
65% Polyester  
35% Coton  
•**Composition globale:**  
85% PVC  
10% Polyester  
5% Coton  
•600 gr/m<sup>2</sup> (poids)  
•Martindale 51.200 cycles  
•Ignifuge classe 1



**Cat. B**  
**Crepe**

•100% Poliestere  
FR-TREVIRA CS  
•330 gr/m<sup>2</sup> (peso)  
•Martindale 100.000 cicli  
•Ignifugo classe 1

•100% Polyester  
FR-TREVIRA CS  
•330 gr/m<sup>2</sup> (weight)  
•Martindale 100.000 turns  
•Fire-retardant class 1  
(one)

•100% Polyester  
FR-TREVIRA CS  
•330 gr/m<sup>2</sup> (poids)  
•Martindale 100.000 cycles  
•Ignifuge classe 1

**Cat. D**  
**Stretch**

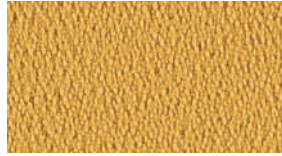
•100% Poliestere FR  
RICICLATO  
•340 gr/m<sup>2</sup> (peso)  
•Martindale 50.000 cicli  
•Ignifugo classe 1

•100% Polyester FR  
RECYCLED  
•340 gr/m<sup>2</sup> (weight)  
•Martindale 50.000 turns  
•Fire-retardant class 1  
(one)

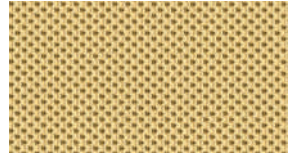
•100% Polyester FR  
RECYCLÉ  
•340 gr/m<sup>2</sup> (poids)  
•Martindale 50.000 cycles  
•Ignifuge classe 1



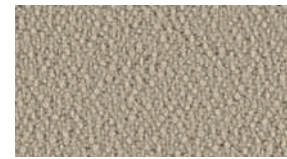
**Cod. 522**  
Grigio Perla  
Light Grey  
Gris Clair



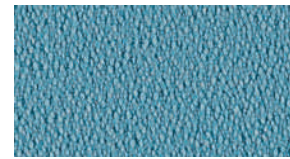
**Cod. 534**  
Giallo  
Yellow  
Jaune



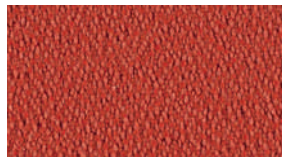
**Cod. 595**  
Giallo Fresia  
Fresia Yellow  
Jaune Freesia



**Cod. 525**  
Avorio  
Ivory  
Ivoire



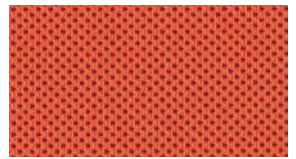
**Cod. 530**  
Artico  
Arctic  
Arctique



**Cod. 535**  
Arancio  
Orange  
Orange



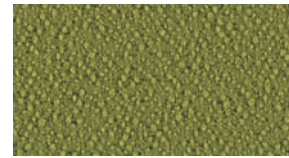
**Cod. 585**  
Avorio  
Ivory  
Ivoire



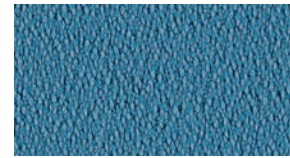
**Cod. 596**  
Arancio  
Orange  
Orange



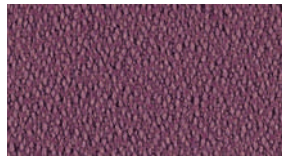
**Cod. 523**  
Grigio Scuro  
Dark Grey  
Gris Foncé



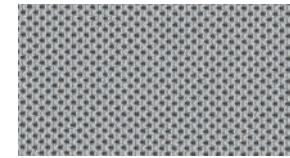
**Cod. 528**  
Verde Acido  
Acid Green  
Vert Acide



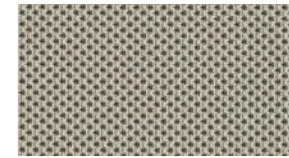
**Cod. 531**  
Celeste  
Light Blue  
Bleu Clair



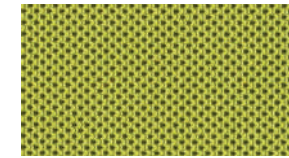
**Cod. 536**  
Vinaccio  
Wine Red  
Rouge Vin



**Cod. 586**  
Grigio  
Grey  
Gris



**Cod. 589**  
Tortora  
Grey Beige  
Gris Tourterelle



**Cod. 591**  
Verde Acido  
Acid Green  
Vert Acide



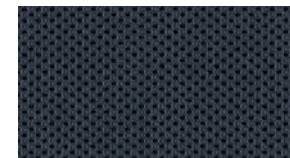
**Cod. 526**  
Nocciola  
Hazel  
Noisette



**Cod. 532**  
Cobalto  
Cobalt  
Cobalt



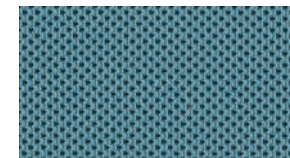
**Cod. 537**  
Rosso  
Red  
Rouge



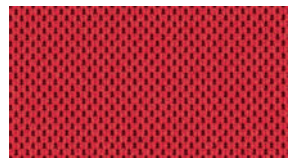
**Cod. 587**  
Antracite  
Anthracite  
Anthracite



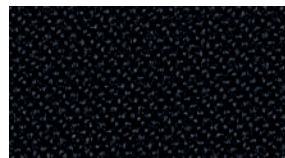
**Cod. 592**  
Verde Bosco  
Wood Green  
Vert Forêt



**Cod. 593**  
Azzurro Sky  
Sky Blue  
Bleu Sky



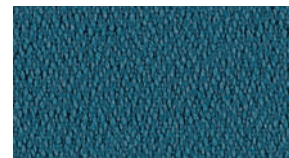
**Cod. 597**  
Rosso  
Red  
Rouge



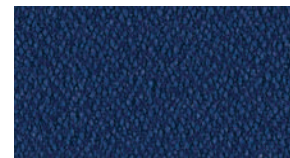
**Cod. 524**  
Nero  
Black  
Noir



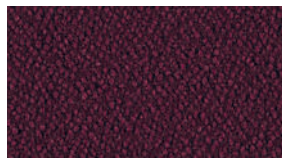
**Cod. 527**  
Malto  
Malt  
Malt



**Cod. 529**  
Petrolio  
Petroleum  
Huile



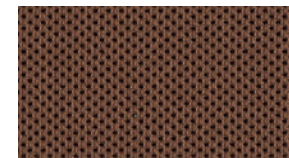
**Cod. 533**  
Blu  
Blue  
Bleu



**Cod. 538**  
Prugna  
Plum  
Prune



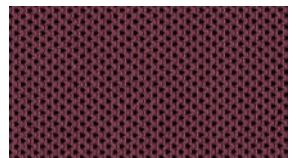
**Cod. 588**  
Nero  
Black  
Noir



**Cod. 590**  
Marrone  
Brown  
Marron



**Cod. 594**  
Blu  
Blue  
Bleu



**Cod. 598**  
Amaranto  
Amaranth  
Amarante

**Cat. D**  
**Melange**

•100% Poliestere  
FR RICICLATO  
•340 gr/m<sup>2</sup> (peso)  
•Martindale 50.000 cicli  
•Ignifugo classe 1

•100% Polyester  
FR RECYCLED  
•340 gr/m<sup>2</sup> (weight)  
•Martindale 50.000 turns  
•Fire-retardant class 1  
(one)

•100% Polyester  
FR RECYCLÉ  
•340 gr/m<sup>2</sup> (poids)  
•Martindale 50.000 cycles  
•Ignifuge classe 1

**Cat. D**  
**Trevi**

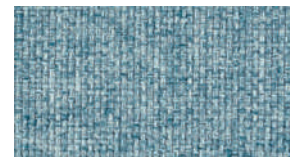
•100% Poliestere  
FR TREVIRA CS  
•450 gr/m<sup>2</sup> (peso)  
•Martindale 70.000 cicli  
•Ignifugo classe 1

•100% Polyester  
FR TREVIRA CS  
•450 gr/m<sup>2</sup> (weight)  
•Martindale 70.000 turns  
•Fire-retardant class 1  
(one)

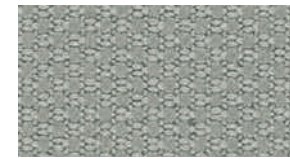
•100% Polyester  
FR TREVIRA CS  
•450 gr/m<sup>2</sup> (poids)  
•Martindale 70.000 cycles  
•Ignifuge classe 1



**Cod. 603**  
Cenere  
Ash  
Cendre



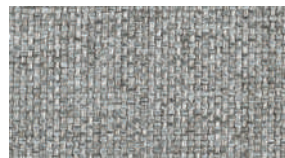
**Cod. 611**  
Artico  
Arctic  
Arctique



**Cod. 621**  
Grigio  
Grey  
Gris



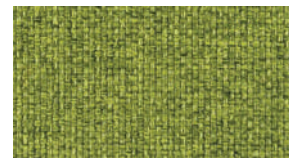
**Cod. 633**  
Ocra  
Ocher  
Ocre



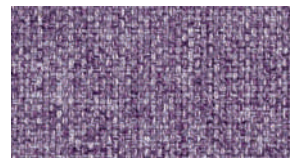
**Cod. 604**  
Grigio  
Grey  
Gris



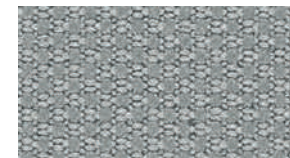
**Cod. 606**  
Tortora  
Grey Beige  
Gris Tourterelle



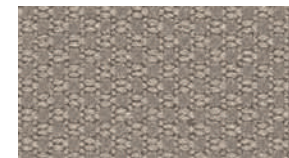
**Cod. 608**  
Verde Acido  
Acid Green  
Vert Acide



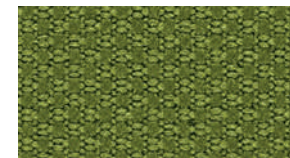
**Cod. 614**  
Petunia  
Petunia  
Pétunia



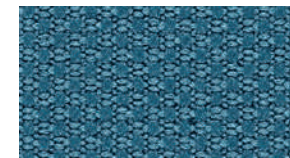
**Cod. 622**  
Porfido  
Porphyry  
Porphyre



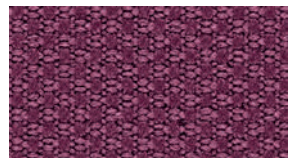
**Cod. 625**  
Tortora  
Grey Beige  
Gris Tourterelle



**Cod. 628**  
Verde Acido  
Acid Green  
Vert Acide



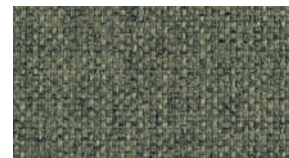
**Cod. 630**  
Celeste  
Light Blue  
Bleu Clair



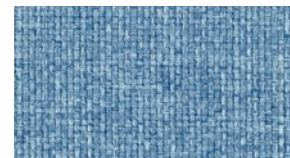
**Cod. 635**  
Petunia  
Petunia  
Pétunia



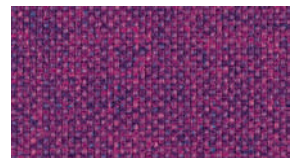
**Cod. 605**  
Fumo  
Smoke  
Fumée



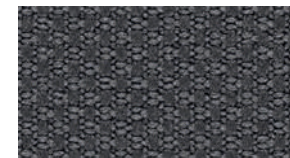
**Cod. 609**  
Muschio  
Moss Green  
Vert Mousse



**Cod. 612**  
Azzurro  
Azure  
Azur



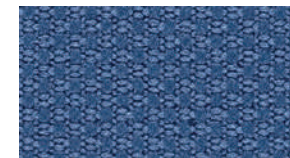
**Cod. 615**  
Ribes  
Currant  
Groseille



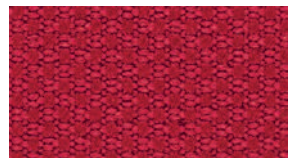
**Cod. 623**  
Grigio Scuro  
Dark Grey  
Gris Foncé



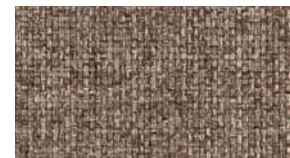
**Cod. 626**  
Nocciola  
Hazel  
Noisette



**Cod. 631**  
Pervinca  
Periwinkle  
Pervenche



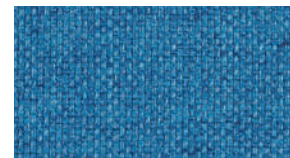
**Cod. 636**  
Rosso  
Red  
Rouge



**Cod. 607**  
Nocciola  
Hazel  
Noisette



**Cod. 610**  
Verdone  
Dark Green  
Vert Foncé



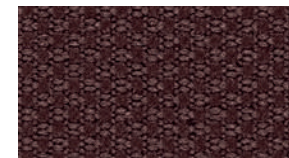
**Cod. 613**  
Cobalto  
Cobalt  
Cobalt



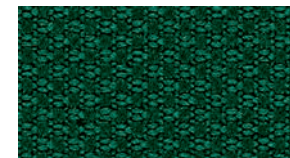
**Cod. 616**  
Granata  
Garnet  
Grenat



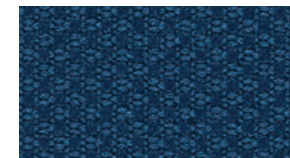
**Cod. 624**  
Nero  
Black  
Noir



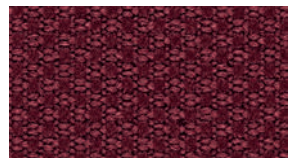
**Cod. 627**  
Marrone  
Brown  
Marron



**Cod. 629**  
Petrolio  
Petroleum  
Pétrole



**Cod. 632**  
Blu  
Blue  
Bleu



**Cod. 637**  
Amaranto  
Amaranth  
Amarante

**Cat. E**  
**Lana**

•75% Lana/25% Poliammide  
•335 gr/m<sup>2</sup> (peso)  
•Martindale 100.000 cicli

•75% Wool/25% Polyamide  
•335 gr/m<sup>2</sup> (weight)  
•Martindale 100.000 turns

•75% Laine/25% Polyamide  
•335 gr/m<sup>2</sup> (poids)  
•Martindale 100.000 cycles



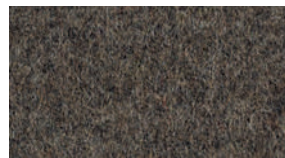
**Cod. 642**  
Grigio Chiaro  
Light Grey  
Gris Clair



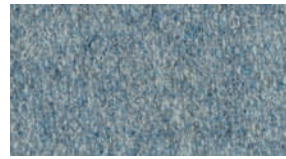
**Cod. 645**  
Tortora  
Grey Beige  
Gris Tourterelle



**Cod. 643**  
Grigio Scuro  
Dark Grey  
Gris Foncé



**Cod. 644**  
Fumo  
Smoke  
Fumée



**Cod. 649**  
Artico  
Arctic  
Arctique



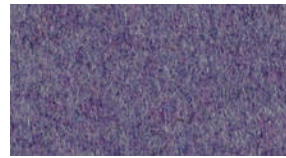
**Cod. 650**  
Malibù  
Malibu  
Malibu



**Cod. 653**  
Ruggine  
Russet  
Rouille



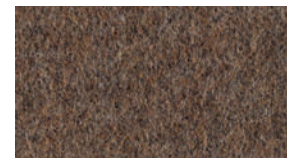
**Cod. 647**  
Verde Acido  
Acid Green  
Vert Acide



**Cod. 651**  
Pervinca  
Periwinkle  
Pervenche



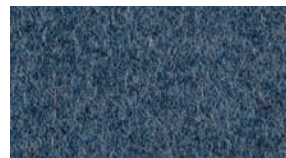
**Cod. 654**  
Mattone  
Brick Red  
Rouge Brique



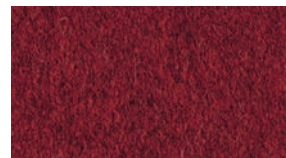
**Cod. 646**  
Marrone  
Brown  
Marron



**Cod. 648**  
Muschio  
Moss Green  
Vert Mousse



**Cod. 652**  
Avio  
Navy Blue  
Bleu Aviateur



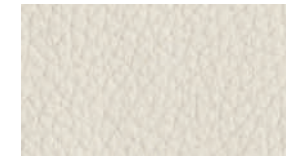
**Cod. 655**  
Fuoco  
Fire Red  
Rouge Feu

**Cat. E**  
**Crazy by**  
**Flukso**

•80% PVC/18% Poliestere/  
2% Fibra poliuretanic  
•600 gr/m<sup>2</sup> (peso)  
•Martindale 50.000 cicli  
•Ignifugo classe 1

•80% PVC/18% Poliestere/  
2% Fibra poliuretanic  
•600 gr/m<sup>2</sup> (weight)  
•Martindale 50.000 turns  
•Fire-retardant class 1  
(one)

•80% PVC/18% Polyester/  
2% Fibres de polyuréthane  
•600 gr/m<sup>2</sup> (poids)  
•Martindale 50.000 cycles  
•Ignifuge classe 1



**Cod. 660**  
Bianco  
White  
Blanc



**Cod. 661**  
Grigio  
Grey  
Gris



**Cod. 663**  
Beige  
Beige  
Beige



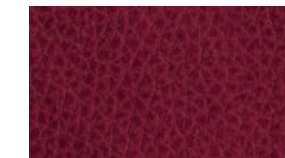
**Cod. 665**  
Oliva  
Olive  
Olive



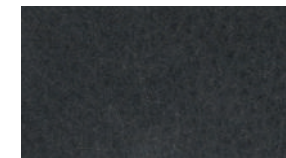
**Cod. 664**  
Tabacco  
Tobacco  
Tabac



**Cod. 667**  
Navy  
Navy Blue  
Bleu Aviateur



**Cod. 669**  
Rosso  
Red  
Rouge



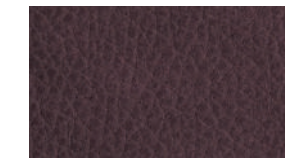
**Cod. 662**  
Grafite  
Graphite  
Graphite



**Cod. 666**  
Alga  
Seaweed  
Algue



**Cod. 668**  
Blu  
Blue  
Bleu



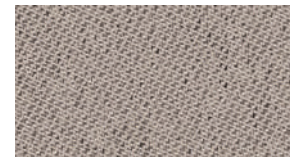
**Cod. 670**  
Vinaccio  
Wine Red  
Rouge Vin

**Cat. E**  
**Chili by**  
**Gabriel**

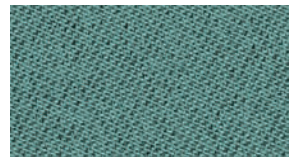
•75% Poliestere riciclato post-consumo FR/ 25% Poliestere FR (FR all'interno della fibra)  
•335 gr/m<sup>2</sup> (peso)  
•Martindale 60.000 cicli  
•Ignifugo classe 1

•75% Post-consumer recycled Polyester FR/ 25% Polyester FR (FR inside the fiber)  
•335 gr/m<sup>2</sup> (weight)  
•Martindale 60.000 turns  
•Fire-retardant class 1 (one)

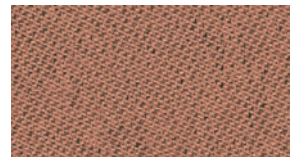
•75% polyester recyclé post-consommation FR/ 25% polyester FR (FR à l'intérieur de la fibre)  
•335 gr/m<sup>2</sup> (poids)  
•Martindale 60.000 cycles  
•Ignifuge classe 1



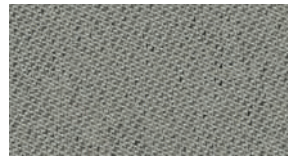
**Cod. 677**  
Avorio Polvere  
Powder Ivory  
Ivoire Poudre



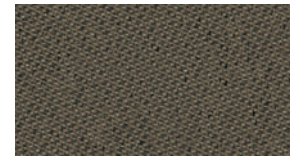
**Cod. 681**  
Acquamarina  
Acquamarine  
Aigue-Marine



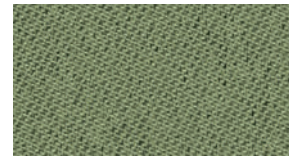
**Cod. 684**  
Cipria  
Powder Pink  
Rose Poudre



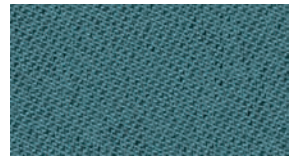
**Cod. 675**  
Grigio Chiaro  
Light Grey  
Gris Clair



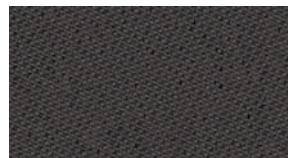
**Cod. 678**  
Tortora  
Grey Beige  
Gris Tourterelle



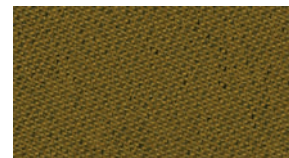
**Cod. 679**  
Salvia  
Sage  
Saugé



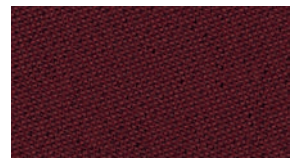
**Cod. 682**  
Avio  
Navy Blue  
Bleu Aviateur



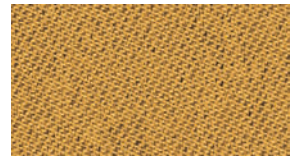
**Cod. 676**  
Antracite  
Anthracite  
Anthracite



**Cod. 680**  
Fieno  
Hay  
Foin



**Cod. 685**  
Vinaccio  
Wine Red  
Rouge Vin



**Cod. 683**  
Senape  
Mustard  
Moutarde

**Cat. F**  
**Taylor FR.**  
**by Flukso**

•100% Poliestere  
•330 gr/m<sup>2</sup> (peso)  
•Martindale 60.000 cicli  
•Ignifugo classe 1

•100% Polyester  
•330 gr/m<sup>2</sup> (weight)  
•Martindale 60.000 turns  
•Fire-retardant class 1 (one)

•100% Polyester  
•330 gr/m<sup>2</sup> (poids)  
•Martindale 60.000 cycles  
•Ignifuge classe 1



**Cod. 689**  
Marna  
Marl  
Marne



**Cod. 699**  
Ocra  
Ocher  
Ocre



**Cod. 690**  
Grigio Scuro  
Dark Grey  
Gris Foncé



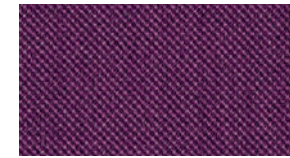
**Cod. 693**  
Tortora  
Grey Beige  
Gris Tourterelle



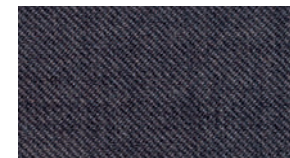
**Cod. 695**  
Oliva  
Olive  
Olive



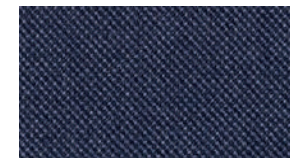
**Cod. 700**  
Mattone  
Brick Red  
Rouge Brique



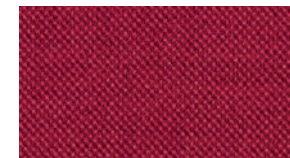
**Cod. 701**  
Prugna  
Plum  
Prune



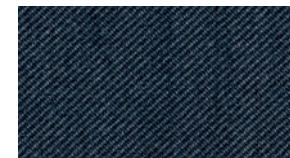
**Cod. 691**  
Grafite  
Graphite  
Graphite



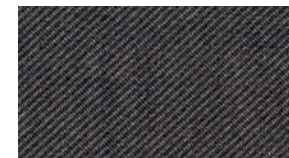
**Cod. 697**  
Avio  
Navy Blue  
Bleu Aviateur



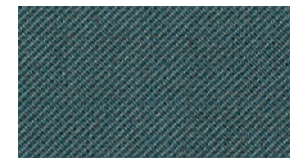
**Cod. 702**  
Rosso  
Red  
Rouge



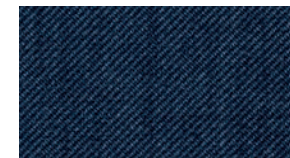
**Cod. 692**  
Nero  
Black  
Noir



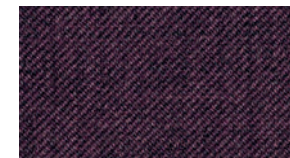
**Cod. 694**  
Tabacco  
Tobacco  
Tabac



**Cod. 696**  
Petrolio  
Petroleum  
Pétrole



**Cod. 698**  
Blu Notte  
Night Blue  
Bleu Nuit



**Cod. 703**  
Vinaccio  
Wine Red  
Rouge Vin

## Cat. G

Go Check by  
Gabriel

•100% Trevira CS  
•310 gr/m<sup>2</sup> (peso)  
•Martindale 80.000 cicli  
•Ignifugo classe 1

•100% Trevira CS  
•310 gr/m<sup>2</sup> (weight)  
•Martindale 80.000 turns  
•Fire-retardant class 1  
(one)

•100% Trevira CS  
•310 gr/m<sup>2</sup> (poids)  
•Martindale 80.000 cycles  
•Ignifuge classe 1

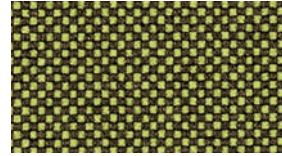
## Cat. I

Crisp by  
Gabriel

•93% Lana Nuova  
Zelanda/7% Poliammide  
•328 gr/m<sup>2</sup> (peso)  
•Martindale 200.000 cicli  
•Ignifugo classe 1

•93% New Zealand Wool/7%  
Polyamide  
•328 gr/m<sup>2</sup> (weight)  
•Martindale 200.000 turns  
•Fire-retardant class 1  
(one)

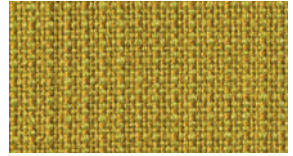
•93% Laine de Nouvelle  
Zélande/7% Polyamide  
•328 gr/m<sup>2</sup> (poids)  
•Martindale 200.000 cycles  
•Ignifuge classe 1



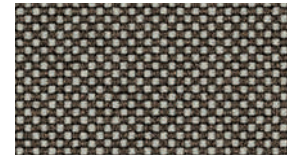
**Cod. 748**  
Giallo  
Yellow  
Jaune



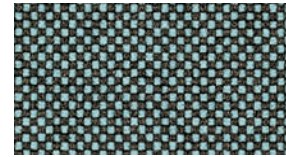
**Cod. 843**  
Avorio Polvere  
Powder Ivory  
Ivoire Poudre



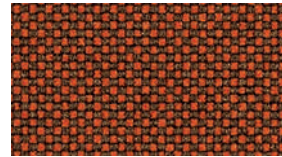
**Cod. 849**  
Senape  
Mustard  
Moutarde



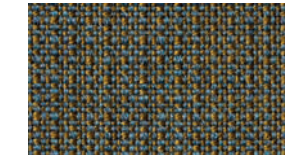
**Cod. 738**  
Beige  
Beige  
Beige



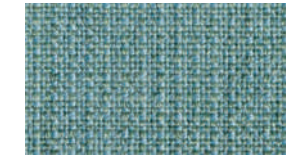
**Cod. 744**  
Azzurro  
Azure  
Azur



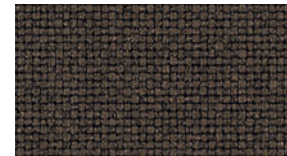
**Cod. 749**  
Arancio  
Orange  
Orange



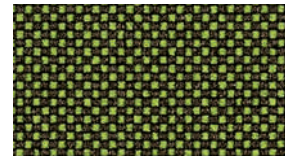
**Cod. 845**  
Limo  
Silt Green  
Vert Bave



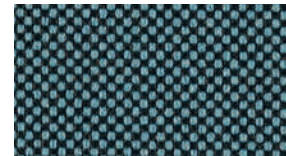
**Cod. 847**  
Acquamarina  
Acquamarine  
Aigue-Marine



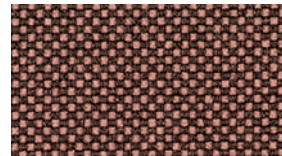
**Cod. 739**  
Fango  
Mud  
Boue



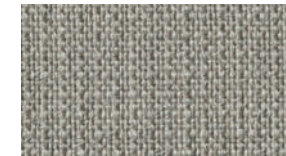
**Cod. 741**  
Verde  
Green  
Vert



**Cod. 745**  
Turchese  
Turquoise  
Turquoise



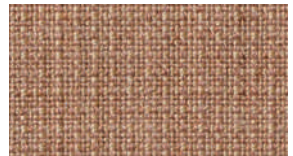
**Cod. 750**  
Pesca  
Peach  
Pêche



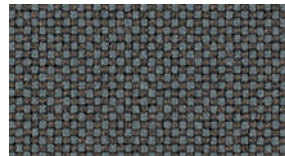
**Cod. 841**  
Grigio Chiaro  
Light Grey  
Gris Clair



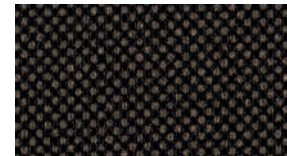
**Cod. 846**  
Salvia  
Sage  
Sauge



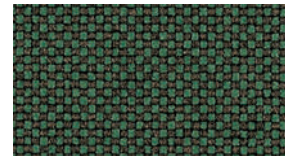
**Cod. 850**  
Cipria  
Powder Pink  
Rose Poudre



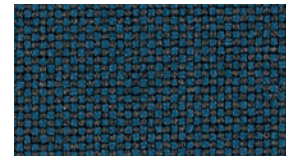
**Cod. 736**  
Grigio  
Grey  
Gris



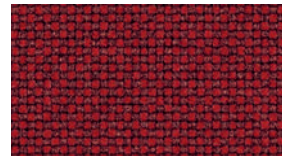
**Cod. 740**  
Cacao  
Cocoa  
Cacao



**Cod. 742**  
Prato  
Lawn  
Pelouse



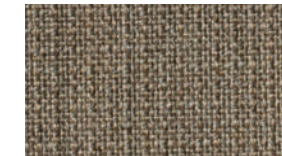
**Cod. 746**  
Mare  
Sea  
Mer



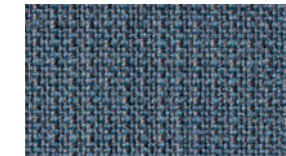
**Cod. 751**  
Rosso  
Red  
Rouge



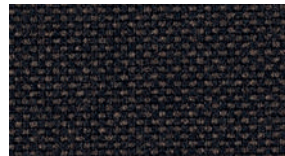
**Cod. 842**  
Antracite  
Anthracite  
Anthracite



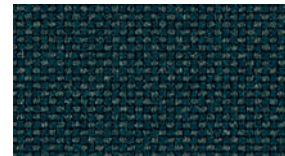
**Cod. 844**  
Tortora  
Grey Beige  
Gris Tourterelle



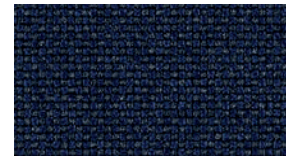
**Cod. 848**  
Avio  
Navy Blue  
Bleu Aviateur



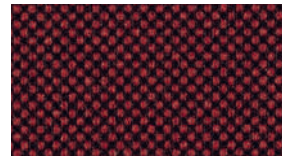
**Cod. 737**  
Nero  
Black  
Noir



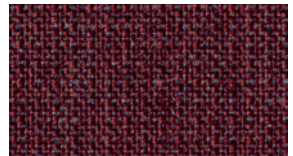
**Cod. 743**  
Bottiglia  
Bottle  
Bouteille



**Cod. 747**  
Blu  
Blue  
Bleu



**Cod. 752**  
Amaranto  
Amaranth  
Amarante



**Cod. 851**  
Vinaccio  
Wine Red  
Rouge Vin

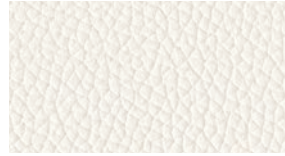
## Cat. H

### Pelle

•100% pelle bovina, smerigliata e stampata. Spessore 0,8-1,0 mm.  
Eventuali imperfezioni, graffi e cicatrici presenti nella pelle non devono essere considerati difetti, ma pregi e caratteristiche di garanzia e autenticità della vera pelle

•100% cowhide, sanded and printed. Thickness 0.8 - 1.0 mm.  
Possible leather scratches and marks are not to be considered imperfections but a guarantee of its quality and authenticity

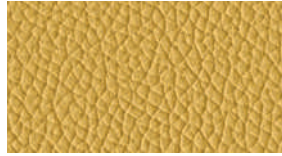
•100% cuire de bovins, poncé et imprimé. Epaisseur: 0,8-1,0 mm.  
Les éventuelles imperfections, égratignures ou cicatrices présentes dans le cuir ne sont pas des défauts, mais des marques naturelles, une garantie de l'authenticité du vraicuir



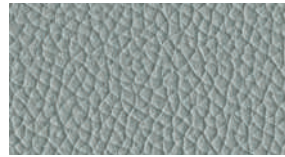
**Cod. 773**  
Bianco  
White  
Blanc



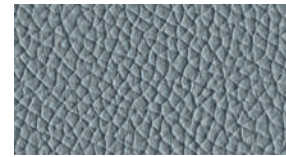
**Cod. 777**  
Latte  
Milk  
Lait



**Cod. 787**  
Ananas  
Pineapple  
Ananas



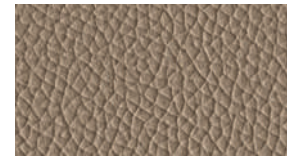
**Cod. 774**  
Acqua  
Water  
Eau



**Cod. 784**  
Piombo  
Lead  
Plomb



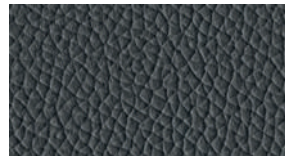
**Cod. 788**  
Arancio  
Orange  
Orange



**Cod. 778**  
Pietra  
Stone  
Pierre



**Cod. 781**  
Lime  
Lime  
Lime



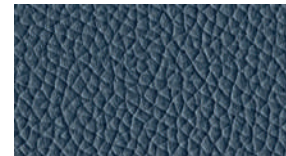
**Cod. 775**  
Ardesia  
Slate  
Ardoise



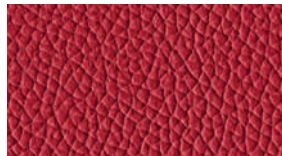
**Cod. 779**  
Fango  
Mud  
Boue



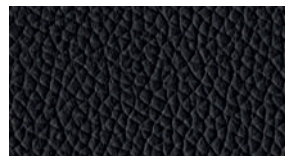
**Cod. 782**  
Muschio  
Moss Green  
Vert Mousse



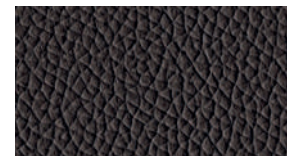
**Cod. 785**  
Blu Notte  
Night Blue  
Bleu Nuit



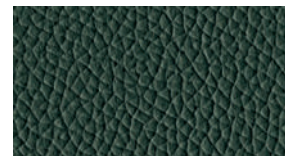
**Cod. 789**  
Rosso  
Red  
Rouge



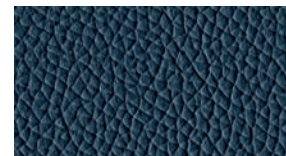
**Cod. 776**  
Nero  
Black  
Noir



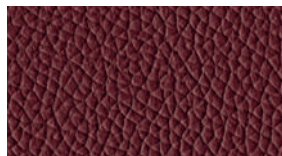
**Cod. 780**  
Testa di Moro  
Dark Brown  
Marron Foncé



**Cod. 783**  
Verdone  
Dark Green  
Vert Foncé



**Cod. 786**  
Oceano  
Ocean  
Océan



**Cod. 790**  
Granata  
Garnet  
Grenet

## Cat. R1

### Rete round

•100% Poliestere  
•510 gr/m<sup>2</sup> (peso)  
•Martindale 60.000 cicli

•100% Polyester  
•510 gr/m<sup>2</sup> (weight)  
•Martindale 60.000 turns

•100% Polyester  
•510 gr/m<sup>2</sup> (poids)  
•Martindale 60.000 cycles



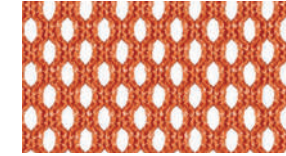
**Cod. 301**  
Bianco  
White  
Blanc



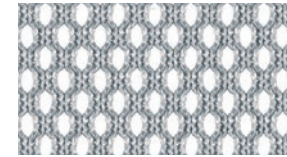
**Cod. 308**  
Verde  
Green  
Vert



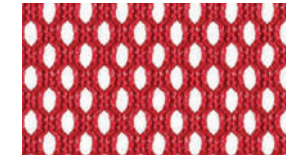
**Cod. 305**  
Blu  
Blue  
Bleu



**Cod. 306**  
Arancio  
Orange  
Orange



**Cod. 302**  
Grigio  
Grey  
Gris



**Cod. 307**  
Rosso  
Red  
Rouge



**Cod. 303**  
Nero  
Black  
Noir

- solo per schienale  
for backrest only  
seulement pour dossier  
SISTEMA RETE  
CAST RETE  
PRIMA RETE  
F03 RETE

**Cat. R2**  
***Rete break***

70% PVC  
30% Poliestere  
Peso: 560 gr/m2  
Martindale 100.000 cicli

70% PVC  
30% Polyester  
Weight: 560 gr/m2  
Martindale 100.000 turns

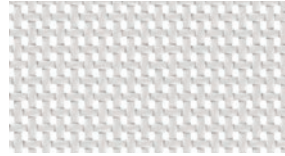
70% PVC  
30% Polyester  
Poids: 560 gr/m2  
Martindale 100.000 cycles

**Cat. R3**  
***Rete Gabriel***

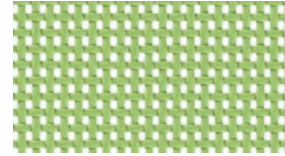
•100% Poliestere  
•328 gr/m<sup>2</sup> (peso)  
•Martindale 70.000 cicli  
•Ignifugo classe 1

•100% Polyester  
•328 gr/m<sup>2</sup> (weight)  
•Martindale 70.000 turns  
•Fire-retardant class 1  
(one)

•100% Polyester  
•328 gr/m<sup>2</sup> (poids)  
•Martindale 70.000 cycles  
•Ignifuge classe 1

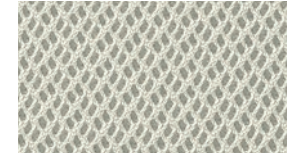


**Cod. 310**  
Bianco  
White  
Blanc

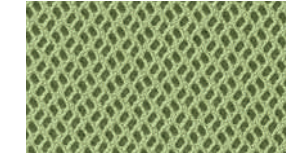


**Cod. 311**  
Verde  
Green  
Vert

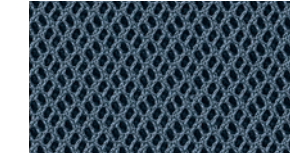
- solo per schienale  
for backrest only  
seulement pour dossier  
HELLO RETE  
CIAK RETE



**Cod. 757**  
Bianco  
White  
Blanc



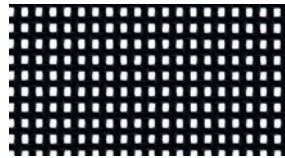
**Cod. 763**  
Verde  
Green  
Vert



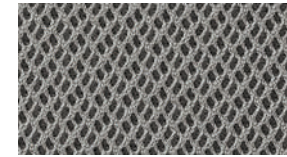
**Cod. 765**  
Turchese  
Turquoise  
Turquoise



**Cod. 768**  
Rosso  
Red  
Rouge



**Cod. 312**  
Nero  
Black  
Noir



**Cod. 758**  
Acciaio  
Steel  
Acier



**Cod. 759**  
Nero  
Black  
Noir

- solo per schienale  
for backrest only  
seulement pour dossier  
OSCAR RETE

**TEC. T1**  
*Mod. F01*

•100% Polipropilene

•100% Polypropylene

•100% Polyprobylene



**Cod.912 (RAL 9003)**  
Bianco  
White  
Blanc



**Cod.940 (PANTONE 7495EC)**  
Verde  
Green  
Vert



**Cod.913 (RAL 3000)**  
Rosso  
Red  
Rouge



**Cod.950**  
Nero  
Black  
Noir

**TEC. T2**  
*Mod. F02*

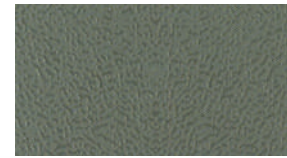
•100% Polipropilene

•100% Polypropylene

•100% Polyprobylene



**Cod.916 (RAL 1013)**  
Avorio  
Ivory  
Ivoire



**Cod.917 (RAL7003)**  
Tortora  
Grey Beige  
Gris Tourterelle



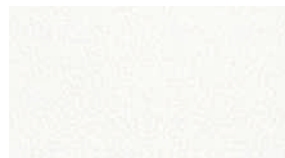
**Cod.918 (RAL 1012)**  
Giallo  
Yellow  
Jaune

**TEC. T3**  
*Mod. F03*

•100% Polipropilene

•100% Polypropylene

•100% Polyprobylene



**Cod.912 (RAL 9003)**  
Bianco  
White  
Blanc



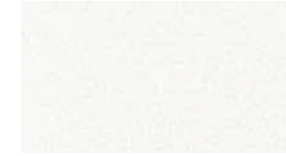
**Cod.950**  
Nero  
Black  
Noir

**TEC. T4**  
*Mod. F04*

•100% Polipropilene

•100% Polypropylene

•100% Polyprobylene



**Cod.911**  
Bianco  
White  
Blanc



**Cod.915**  
Petrolio  
Petroleum  
Pétrole



**Cod.919**  
Arancio  
Orange  
Orange



**Cod.950**  
Nero  
Black  
Noir

**TEC. T5**  
*Mod. Vedette*

•100% Polipropilene

•100% Polypropylene

•100% Polyprobylene



**Cod.909**  
Bianco  
White  
Blanc



**Cod.941**  
Verde  
Green  
Vert



**Cod.955**  
Antracite  
Anthracite  
Anthracite



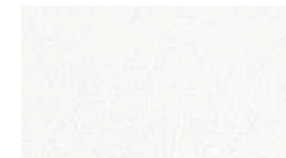
**Cod.960**  
Cipria  
Powder Pink  
Rose Poudre

**TEC. T6**  
*Mod. Provino*

•100% Polipropilene

•100% Polypropylene

•100% Polyprobylene



**Cod.909**  
Bianco  
White  
Blanc



**Cod.914**  
Rosso  
Red  
Rouge



**Cod.950**  
Nero  
Black  
Noir



**Legni**  
*Wood*  
*Bois*

△ 3D Foil



**Cod.68**  
Bianco  
White  
Blanc

△



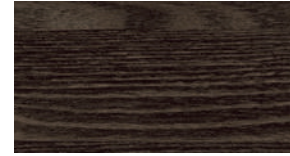
**Cod.56**  
Nero  
Black  
Noir

△



**Cod.12**  
Olmo Grey  
Grey Elm  
Orme Grey

△



**Cod.52**  
Frassino Brown  
Brown Ash  
Frêne Brown

△

**Metallo**  
*Metal*  
*Métal*



**Cod.BI 02**  
Bianco  
White  
Blanc



**Cod.AR 02**  
Argento  
Silver  
Argent



**Cod.SG 01**  
Stone Grey  
Stone Grey  
Stone Grey



**Cod.AN 02**  
Antracite  
Anthracite  
Anthracite



**Cod.NR 03**  
Nero Opaco  
Matt Black  
Noir Mat

**AD\_**  
Arch. Paolo Pampanoni  
**Rendering\_**  
Matic®  
**Concept and Graphic\_**  
d+a  
**Printing\_**  
Grafiche Martintype  
**Photolito\_**  
Selecolor Firenze Srl  
**ED\_**  
08.2021

**LAS**

**Las Mobili s.r.l**

Via dell'Industria, n 81  
64018 Tortoreto (TE) - Italy  
T. +39. 0861 7831  
F. +39. 0861 786851  
**las@las.it - www.las.it**

COD. 100000181

