

ACQUAFUOCO COLLECTION

CATALOGUE

/ EDITION 2023_01

ACQUAFUOCO

*In tutte le cose
della Natura
esiste qualcosa
di meraviglioso.*

*In all things of Nature
there is something
of the marvelous.*

— Aristotele

ACQUAFUOCO

INDICE PRODOTTI / Products index

BIOCAMINI AD INCASSO */ Built-in bio-fireplaces*

- 06** FIREBOX 5 LATI
- 10** FIREBOX 4 LATI
- 14** FIREBOX 3 LATI
- 18** FIREBOX 3 LATI
- 20** FIREBOX PASS
- 26** FIREBOX FREE STANDING

BRUCIATORI */ Burners*

- 30** PLAYER FIBRA
LINEAR FIBRA

BIOCAMINI SOSPESI */ Suspended bio-fireplaces*

- 32** SPACE FIRE

BIOCAMINI DA TERRA */ Floor bio-fireplaces*

- 38** BASKET
- 40** BIG FLAME
- 44** SFERA
- 47** MINERVA
- 50** MINERVA TABLE
- 52** TUBE FLOOR
- 56** SCREEN
- 60** TEKA FIBRA
- 64** NEST
- 68** TRACK

BIOCAMINI DA PARETE */ Wall bio-fireplaces*

- 72** OBLÓ
- 74** FLAME WALL
- 78** ELLIPSE
- 80** TUBE
- 84** PRISMA CONSOLLE

BIOCAMINI DA APPOGGIO */ Table bio-fireplaces*

- 86** WAVE
- 90** HOMU
- 92** CABARÈ

DETTAGLI TECNICI */ Technical details*

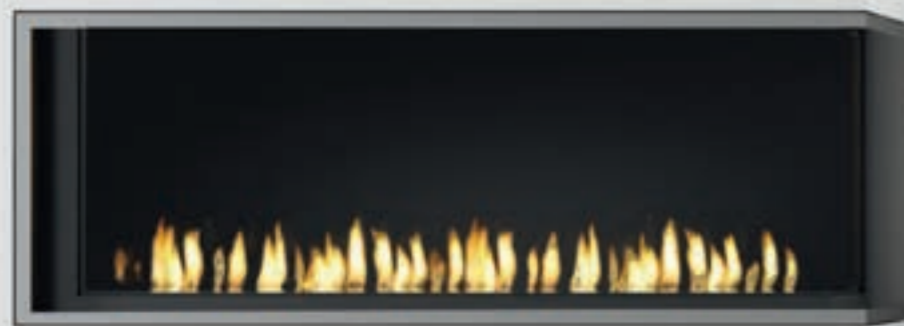
- 95** FINITURE

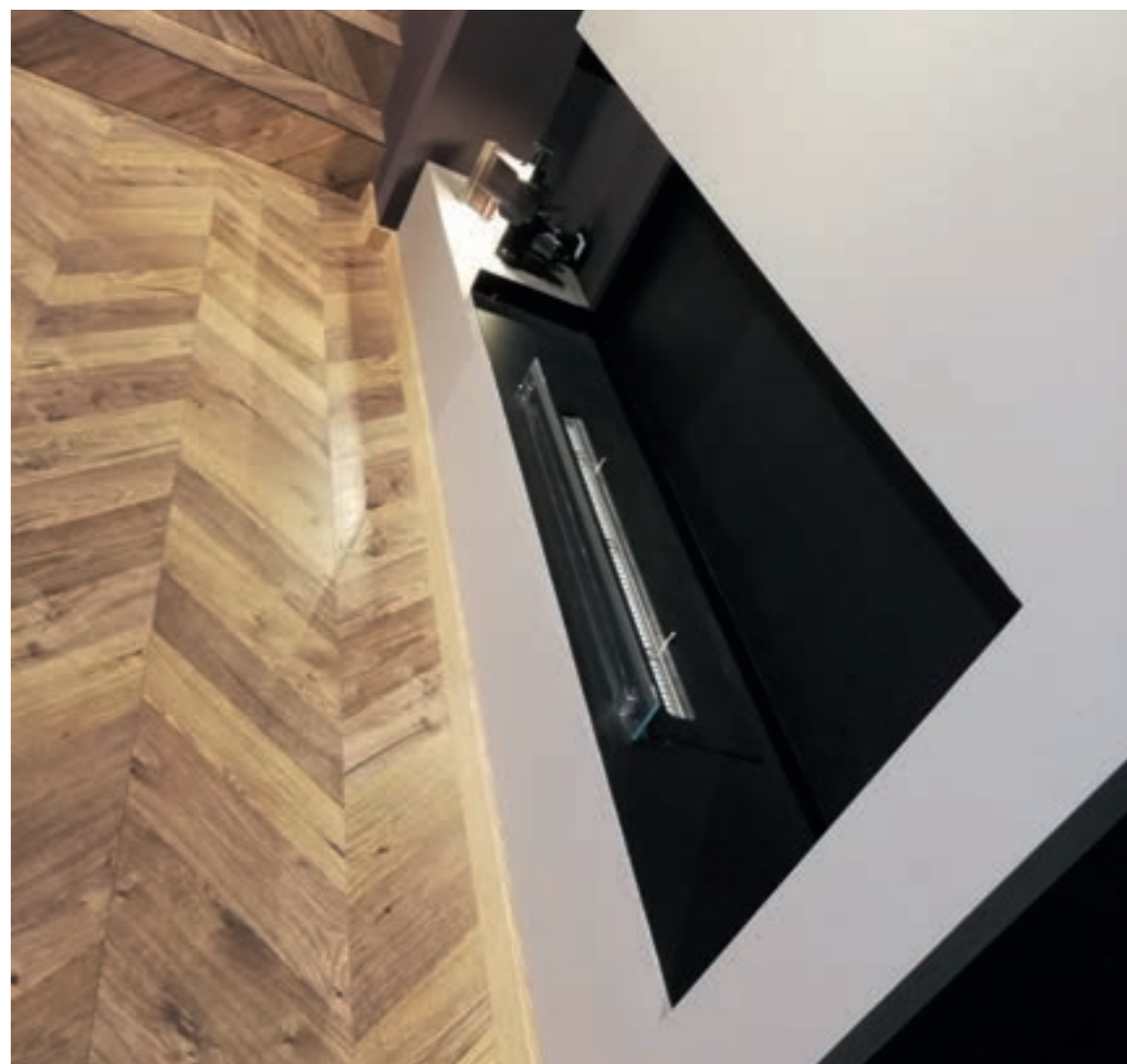
/ FIREBOX BUILT-IN 5 LATI





/ FIREBOX BUILT-IN 4 LATI









/ FIREBOX BUILT-IN 3 LATI





/FIREBOX PASS





/ FIREBOX BUILT-IN

FireBox Built - in 5 - 4 - 3 lati - pass

| Larghezza /Length | L 600 | L 900 | L 1200 | L 1500 |
|---------------------------------|--------------|--------------|--------------|--------------|
| Bruciatore Linear Fibra /Burner | 30 - 40 | 60 | 60 - 80 | 80 - 100 |
| Bruciatore Player /Burner | - | 60 | 60 - 100 | 100 |
| P x H | 300 x 500 mm | 300 x 500 mm | 300 x 500 mm | 300 x 500 mm |

FIREBOX BUILT-IN 5



FIREBOX BUILT-IN 4



FIREBOX BUILT-IN 3A



FIREBOX BUILT-IN 3B



FIREBOX BUILT-IN PASS





/ FIREBOX FREESTANDING

| Larghezza /Length | L 600 | L 900 | L 1200 | L 1500 |
|------------------------------------|--------------|--------------|--------------|--------------|
| Bruciatore Linear Fibra /Burner | 30 - 40 | 60 | 60 - 80 | 80 - 100 |
| Bruciatore Player /Burner | - | 60 | 60 - 100 | 100 |
| P x H | 300 x 600 mm | 300 x 600 mm | 300 x 600 mm | 300 x 600 mm |





/ BRUCIATORI

BURNERS

Bruciatori Player / Player Burners

| | Player Fibra 60 | Player Fibra 100 |
|----------------------|-----------------|------------------|
| Altezza /Height | 121 mm | 121 mm |
| Larghezza /Width | 630 mm | 1 000 mm |
| Profondità /Depth | 230 mm | 230 mm |
| Durata /Burning time | 5 - 6 h | 4 - 5 h |

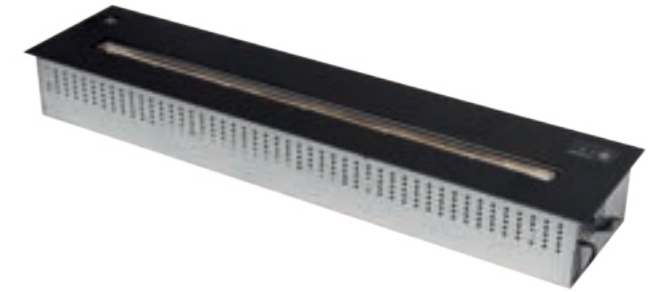
Bruciatori Linear / Linear Burners

| | Linear Fibra 30 | Linear Fibra 40 | Linear Fibra 60 | Linear Fibra 80 | Linear Fibra 100 | Linear Fibra 120 |
|----------------------|-----------------|-----------------|-----------------|-----------------|------------------|------------------|
| Altezza /Height | 85 mm | 85 mm | 85 mm | 85 mm | 85 mm | 85 mm |
| Larghezza /Width | 299 mm | 399 mm | 599 mm | 799 mm | 999 mm | 1199 mm |
| Profondità /Depth | 164 mm | 164 mm | 164 mm | 164 mm | 164 mm | 164 mm |
| Durata /Burning time | 4 - 6 h | 5 - 6 h | 5 - 6 h | 5 - 6 h | 5 - 6 h | 5 - 6 h |

Player Fibra 60



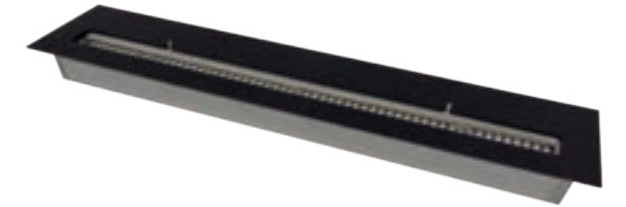
Player Fibra 100



Linear Fibra 30



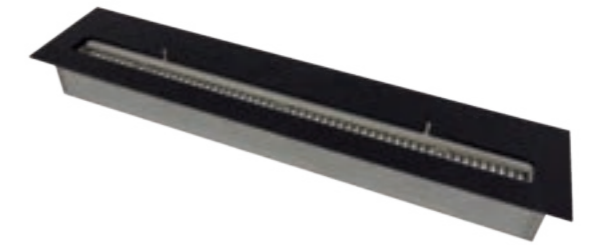
Linear Fibra 80



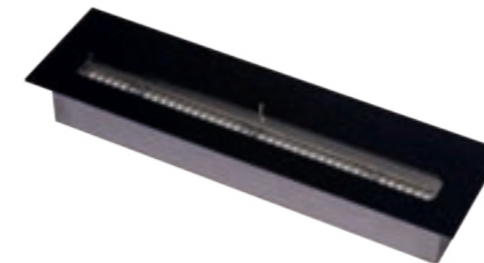
Linear Fibra 40



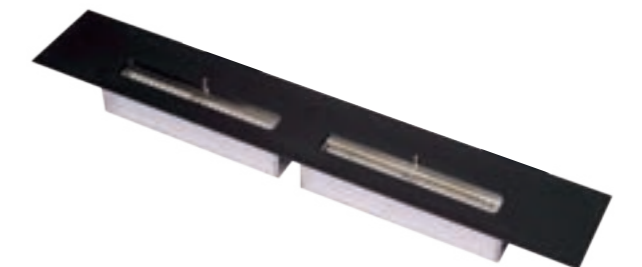
Player Fibra 100



Linear Fibra 60



Player Fibra 120





/SPACE FIRE





/ BASKET

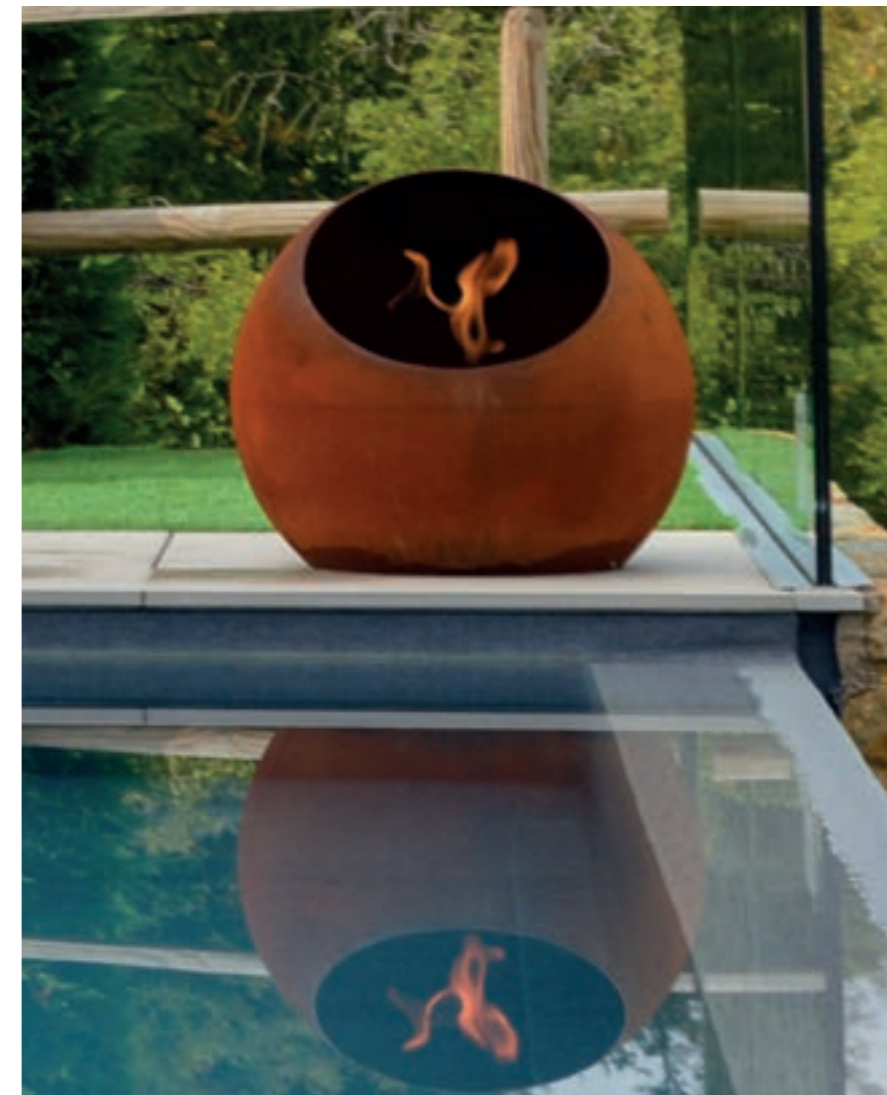


**/BIG
FLAME**





/ SFERA



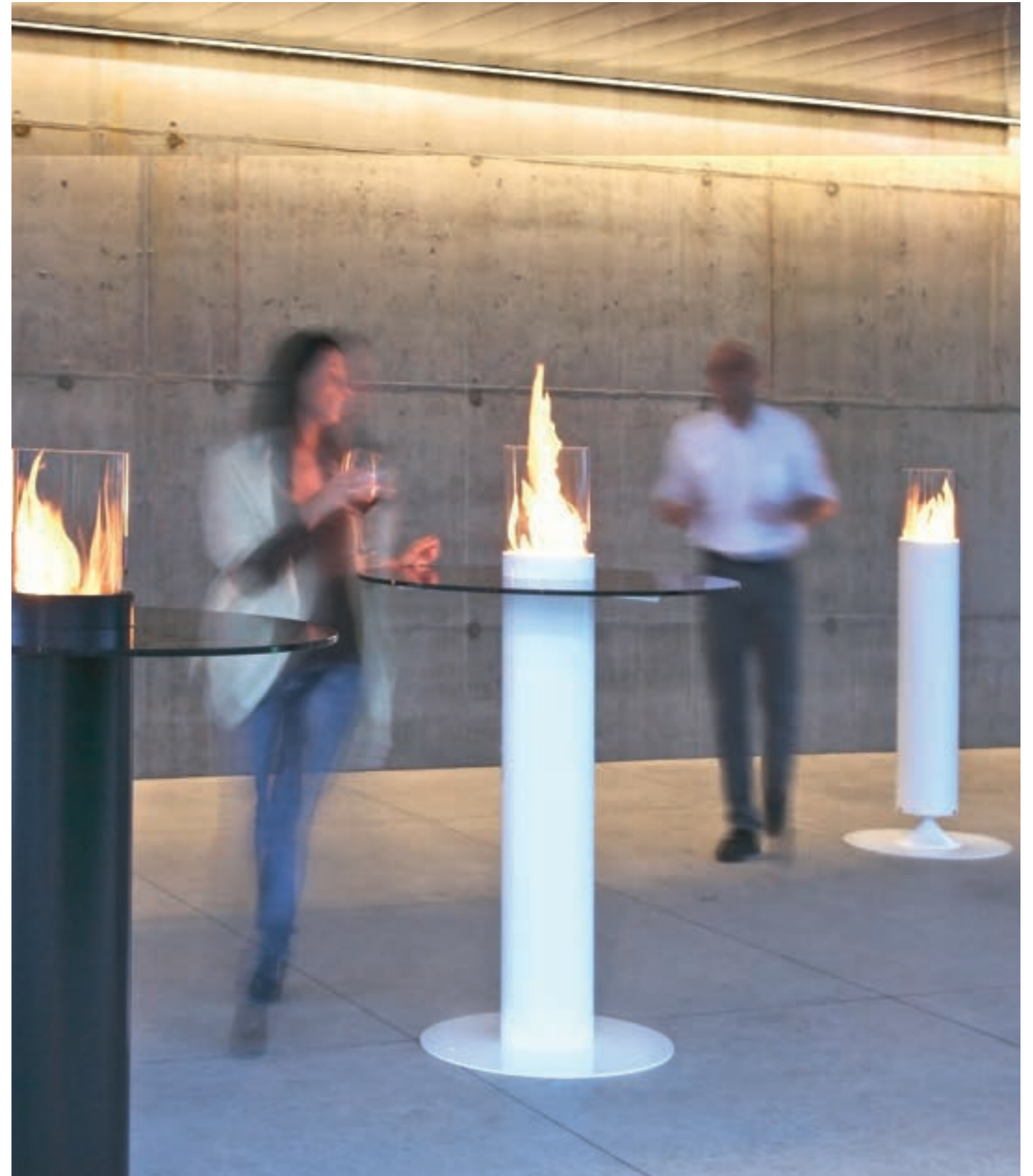


/MINERVA





/MINERVA TABLE



/TUBE FLOOR





/SCREEN





/TEKA FIBRA







/NEST

Nest







/TRACK







/OBLÓ



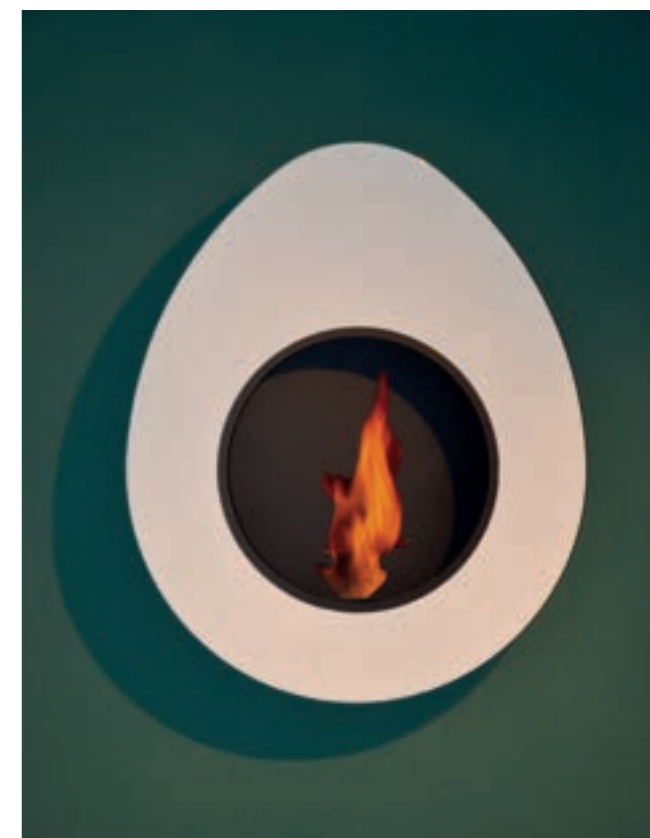
/FLAME WALL







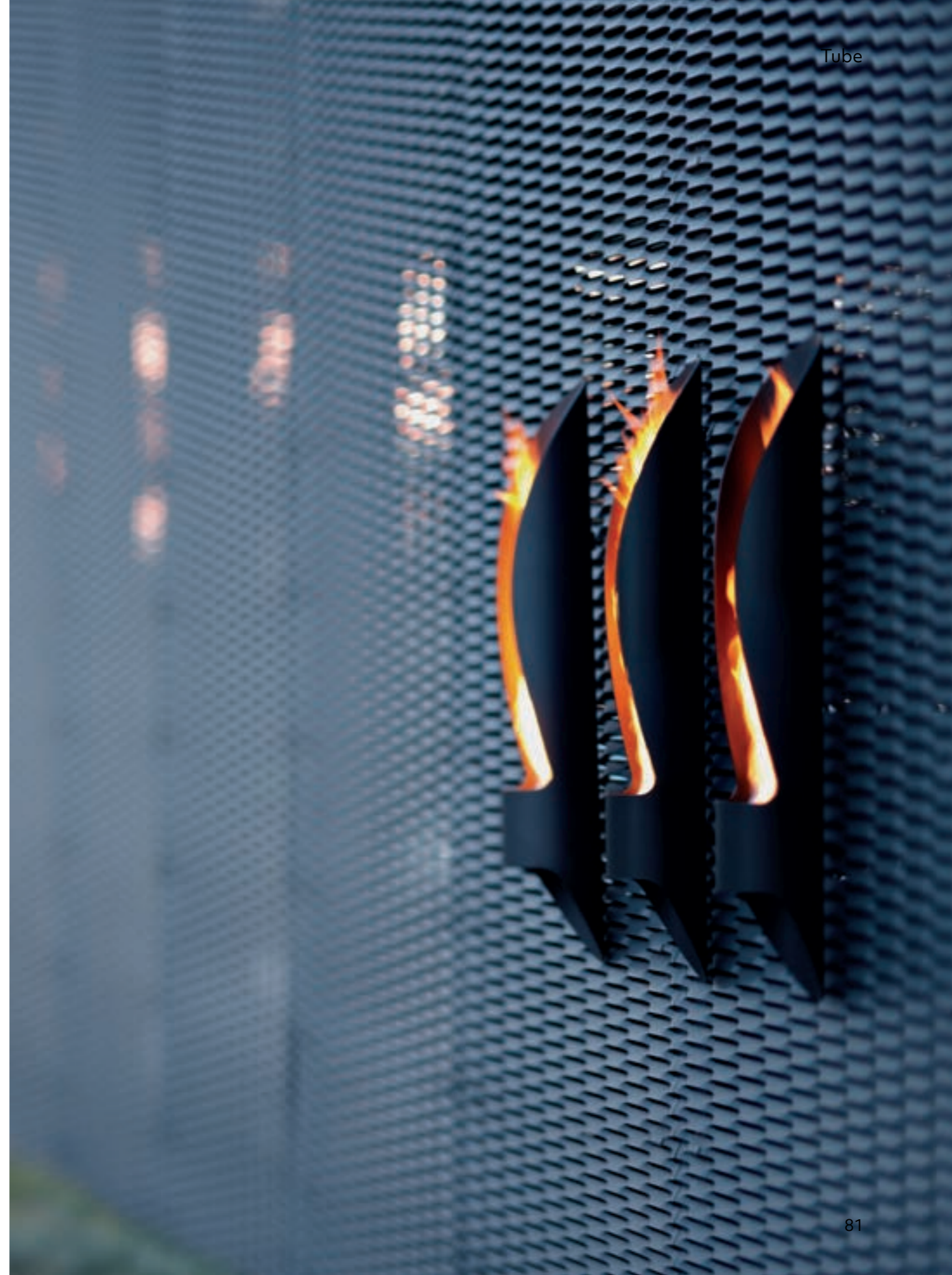
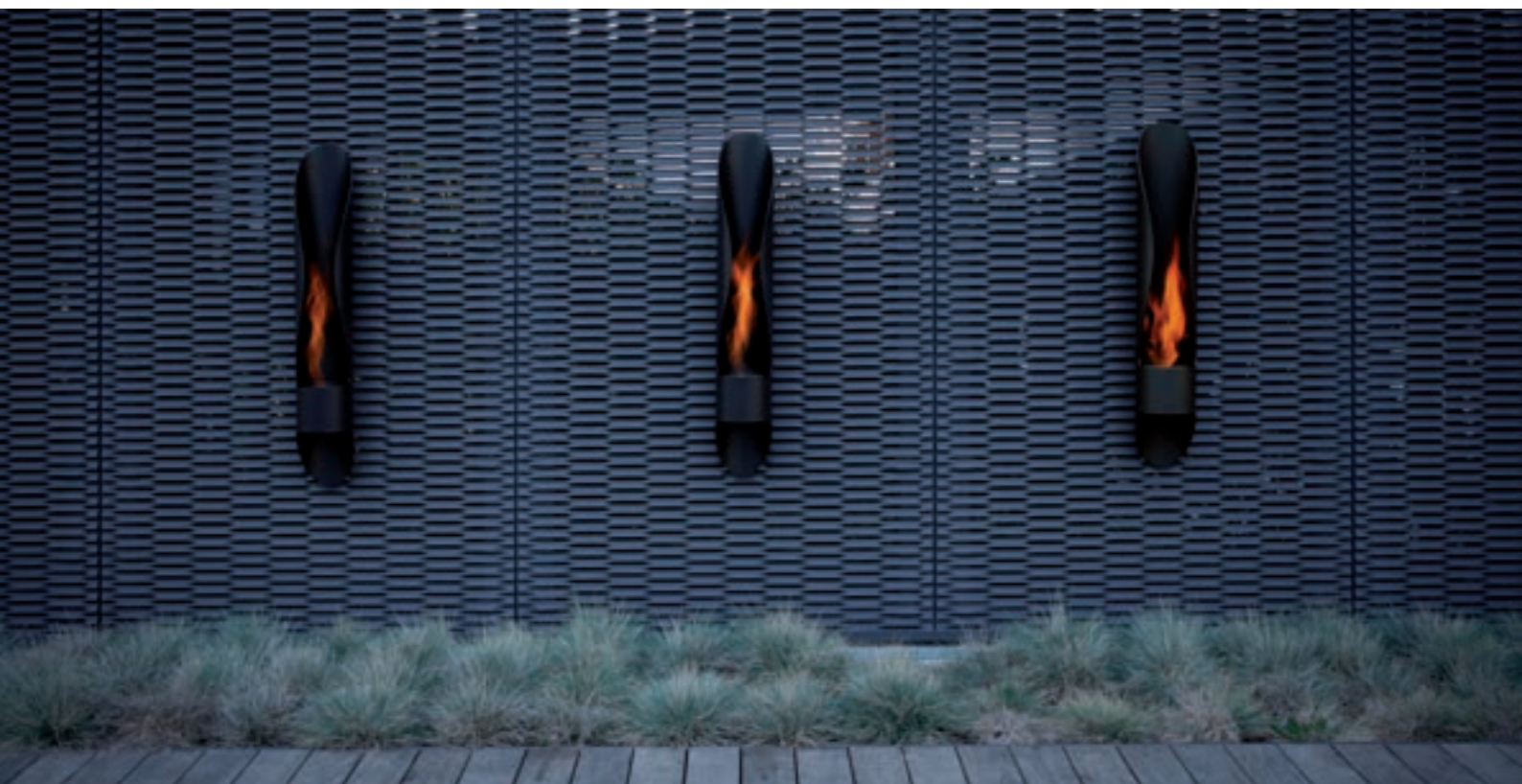
/ ELLIPSE



/TUBE



reddot design award
winner 2010





**/PRISMA
CONSOLLE**





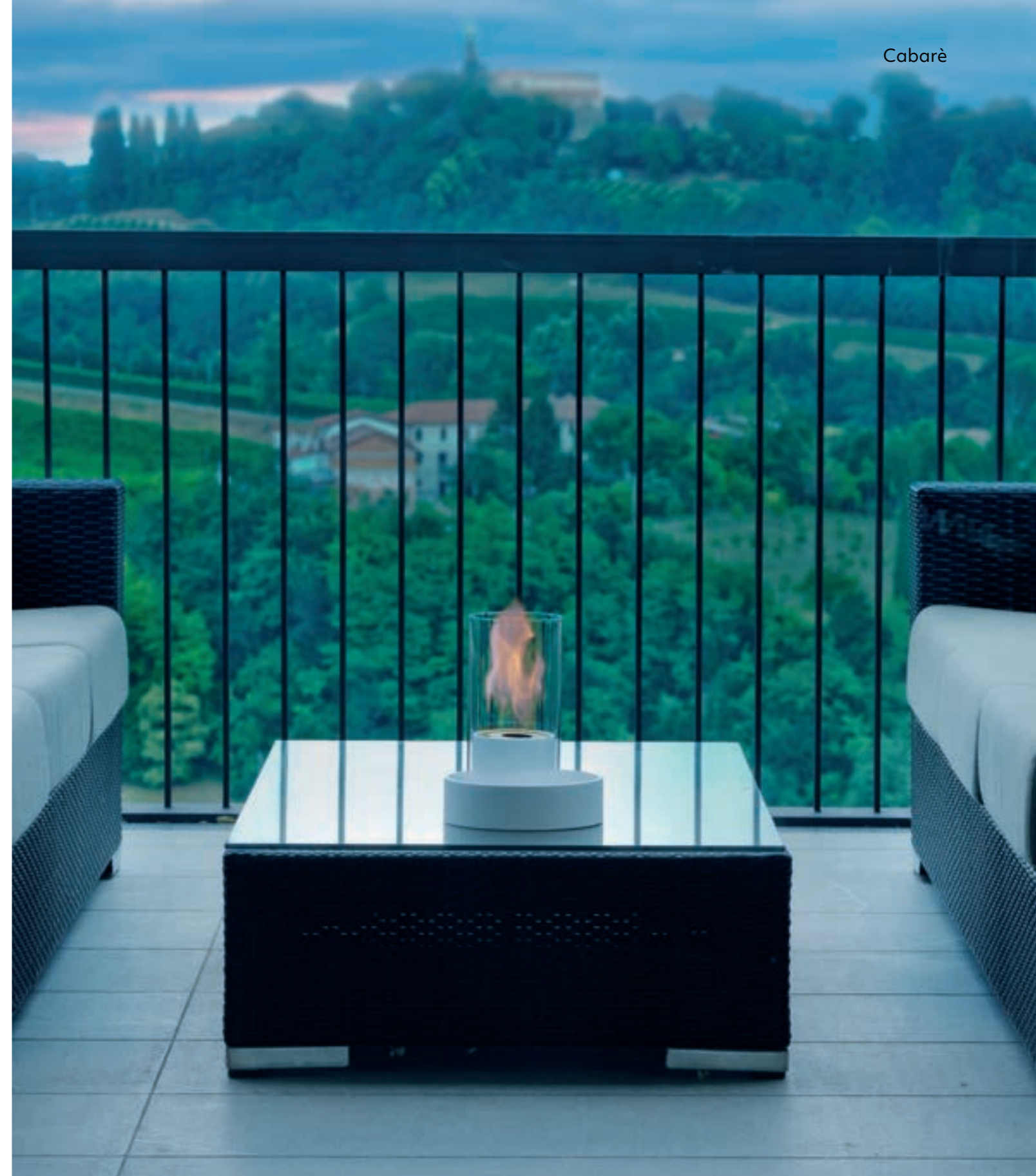
/WAVE



/HOMU

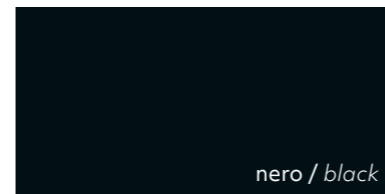
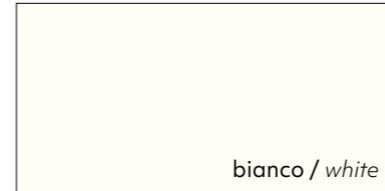


/ CABARÈ

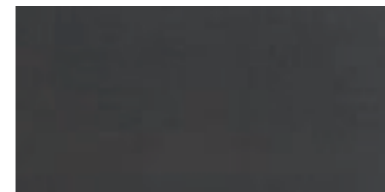


/ FINITURE
/ FINISCHES

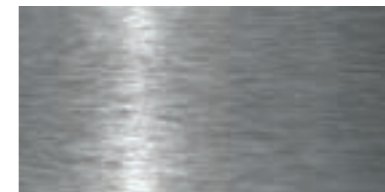
ACCAIO VERNICIATO
/ Painted steel



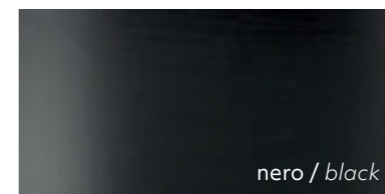
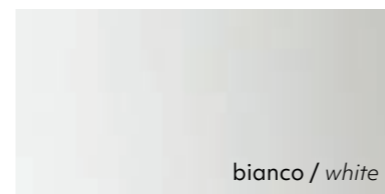
Acciaio nero verniciato a polveri
/ Black powder painted steel



Acciaio inox satinato
/ Brushed stainless steel



Ceramica
/ Ceramic



Marmo
/ Marble

